

# NOW STUDENT COMFORT CAN ALSO MEAN ENERGY SAVINGS

Give students more comfortable housing while keeping energy use predictable, sustainable, and cost-effective

---

INNCOM Energy Management  
for Student Housing

---



**Honeywell**

# SMARTER COMFORT IS MORE EFFICIENT

Honeywell INNCOM energy management detects when students are in the room to automatically switch between savings and comfort, so you can manage temperature and humidity settings centrally, or give students control – all while keeping energy use efficient and cost effective.

Whether your students live in dorms with roommates, or alone, or even with family in graduate apartments, you want the housing you offer to be comfortable. The Honeywell INNCOM platform gives you a simple way to do that while saving energy. Sitewide monitoring and analytics also make it easy to track usage, get early maintenance alerts, and plan budgets.

## HOW IT WORKS

### Conserve energy without compromising comfort

Saving energy in any dorm room or apartment starts with detecting whether the space is occupied. Motion detection is one of the easiest ways to do this, and door sensors add precision.

When a room or unit is empty, our smart thermostat lets the temperature drift over a wider range before engaging the HVAC system. This saves energy and lets HVAC equipment run more efficiently, while enabling the unit to quickly revert to the preferred settings once people return.

This combination of occupancy detection and HVAC automation gives you an energy management system (EMS), which provides more reliable, cost-effective results than just a programmable thermostat.

The INNCOM platform also makes it easy to integrate IoT technologies (Internet of Things) for additional convenience and energy efficiency – such as lighting that uses the same occupancy detection to turn on or off as people come and go.



## VERSATILE OVERSIGHT

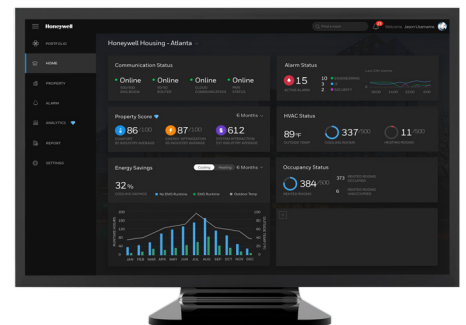
### Use KPIs and analytics to meet long-term goals

INNCOM INNcontrol 5 (IC5) software integrates all the rooms and housing units on a campus – or across multiple sites – into one cybersecure network that's easy to monitor from desktop and mobile devices.

IC5 tracks and analyzes all connected equipment and devices so you can:

- Apply deeper temperature setbacks for greater savings in units that are unoccupied for extended periods – for instance, during holiday breaks.
- Set limits, unit by unit or campus wide – such as sensing to deactivate heating or cooling if windows are open beyond a set time limit.
- Generate reports on equipment that isn't functioning optimally, or which needs servicing to prevent more costly repairs and disruptions.

- Monitor real-time and long-term views of energy use, trends, and other key performance indicators (KPIs).
- View and filter data at any level, from comparisons of campuses or dorms down to details for a specific device
- Use analytics for predictive maintenance, planning and budgets, compliance reporting, or to analyze and report on the effectiveness of energy-saving initiatives



INNcontrol 5 Energy Management Supervisor Software



## PROVEN EXPERIENCE

**In nearly 2 million rooms worldwide**  
For more than 35 years, Honeywell INNCOM systems have proved that smarter sensing and automation saves energy in hospitality facilities – without occupants ever noticing a difference.

More generally, Honeywell has been shaping HVAC and energy technology for more than a century – and in that time, we’ve supported universities and colleges of every size around the world.

From integrating healthier campuses to helping universities become carbon neutral, we’re ready and able to help you meet your energy goals.

## MODULAR CAPABILITIES

### Start with basic occupancy detection and build up

The INNCOM platform is modular and scalable so you can step up your capabilities as needed.

- Standalone EMS: INNCOM EMS thermostat with built-in motion sensor provides basic occupant detection for energy savings that don’t compromise comfort.
- Advanced EMS: Door sensors add rapid, precise occupant detection.
- Smart IoT Capabilities: Integrate an extensive selection of third-party IoT technologies – such as automated lighting.

- Networked EMS: Securely monitor and manage all dorm rooms and housing units with IC5 software to save the greatest amount of energy.

INNCOM devices work with virtually any type of HVAC system in wired or wireless configurations, and install quickly in new construction or retrofits.

## OPTIONS FOR EVERY BUDGET

### The INNCOM Energy Management Service Subscription

As an alternative to a capital investment in the devices and capabilities you need, you also have the option to enroll in a monthly

subscription that pays for itself in energy savings. After three years, your Honeywell INNCOM devices will be fully paid off so your property sees more savings.

## SECURE BY DESIGN

### A founder of the Global Cybersecurity Alliance

From encrypted software and networks to securing your operational technologies (OT) alongside your information technology (IT), we design for data security in everything we do.



INNCOM e7 EMS Thermostat

### Potential HVAC energy management capabilities for guestrooms\*

Networked EMS	+++	Site-wide integration with IoT and analytics	
Integrated Room Automation System	++	Smart IoT in the Residence	
Standalone EMS	++	Motion Detection + Door Sensor	
	+	Motion Detection Only	
Traditional Thermostat			

\*Based on HVAC runtime reduction vs. ETM (traditional thermostat mode) in hotels with average occupancy and < 500 rooms.



**LET'S MAKE THEIR  
COMFORT SUSTAINABLE**

To learn more about how a Honeywell INNCOM system can increase comfort for student residents while lowering housing HVAC costs, contact your Honeywell sales representative, or contact the Honeywell INNCOM team:  
[sales@inncom.com](mailto:sales@inncom.com)  
800-543-1999

**Honeywell Hospitality**

12 Clintonville Road  
Northford, CT 06472  
1-800-543-1999

IN-BR-StudentHousing | 01-00246 | 2021-28-07  
© 2021 Honeywell International Inc.

**THE  
FUTURE  
IS  
WHAT  
WE  
MAKE IT**

**Honeywell**