

# MS-5024UD/MS-5024UDE Field Software Change Procedure

Document 50125 Rev M 7/15/05 ECN 05-429

## Firmware Change

This procedure outlines the mechanical installation steps required to install a PROM in the MS-5024UD/MS-5024UDE.

### ***Handling precautions for integrated circuits***

Static electricity can destroy integrated circuits (ICs)! To prevent damage to the PROM, a wrist strap and a static-free PLCC IC insertion/extraction tool is highly recommended. The manufacturer cannot be responsible for damage to the PROM as a result of improper handling.

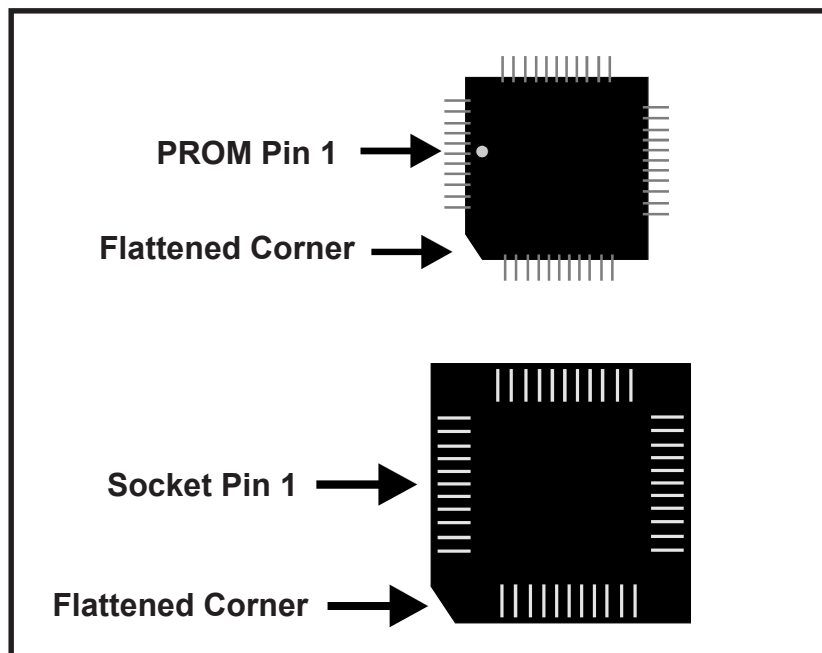
### ***System Power Sources***

Always remove primary and secondary power before working on the system!

1. Disconnect battery backup power before working on the system!
2. Proceed by disconnecting AC power to the panel at the main service circuit breaker (not the circuit breaker on the fire control panel's power supply).
3. Wait 60 seconds to allow for capacitive discharge before touching any of the system's components.
4. Reverse the procedure for powering up the system - AC first, then batteries.

### ***Integrated Circuit Pin Conversion***

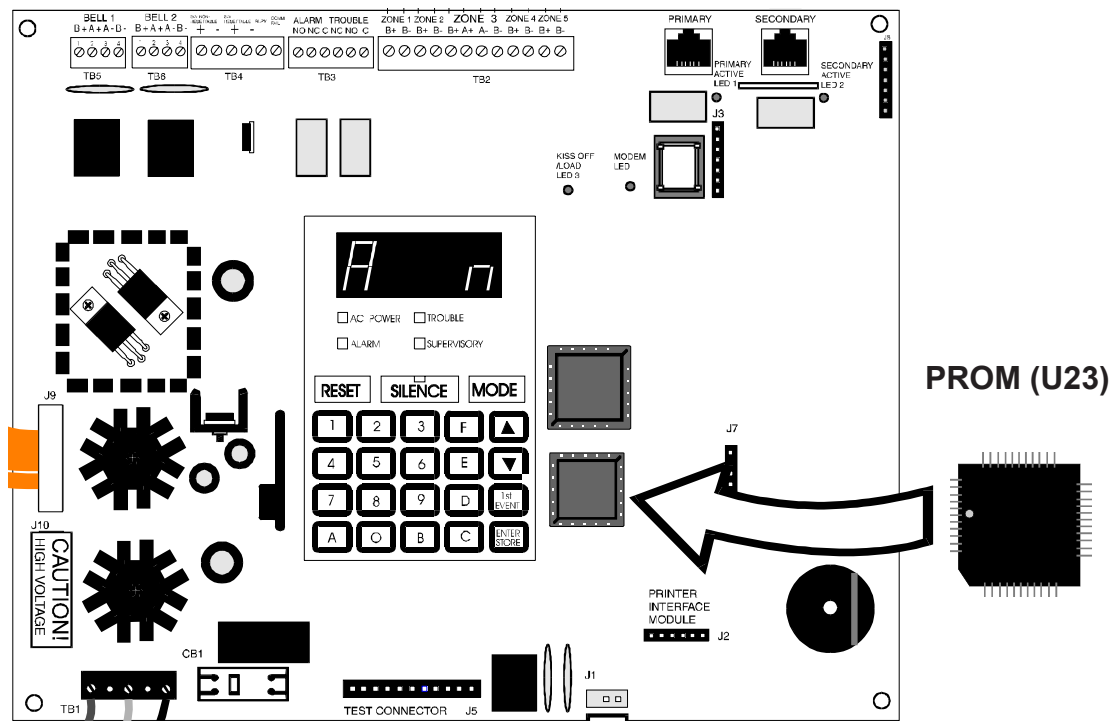
Observe proper orientation of any IC removed or installed! Note location of Pin 1 with respect to the flattened corner and dot on the body of the IC and the relationship to the flattened corner on the IC socket. The replacement PROM must be installed in the same manner as the PROM removed. Failure to observe this orientation will result in destruction of the PROM.



## PROM Replacement

Observe proper orientation of any IC removed or installed! To replace the PROM, complete the following steps:

1. Remove all power (AC and battery) before proceeding with PROM replacement.
2. If necessary, disconnect any installed option modules which may inhibit access to PROM.
3. Locate U23 (center right of the board).
4. Gently loosen and remove the PROM from U23.
5. Install the replacement PROM in location U23. Observe proper orientation! The dot on the IC should be positioned to the left and the flattened corner of the IC should align with the flattened corner of the socket. Use care to insure that the PROM's pins are not bent or broken during insertion.
6. Reconnect any option modules which were removed in Step 2.
7. Reconnect power (AC and batteries).



## Programming and Testing

Recheck all site-specific programming and test the MS-5024UD/MS-5024UDE after PROM replacement.

## MS-5024UD Software Changes

The following Table summarizes the MS-5024UD software changes, specifying these changes by PROM Number and Release Number.

PROM #	Release #	Summary of Changes
73508	1.0	Initial Release
73562	1.1	Prevent spurious characters from getting out the printer port
73613	1.2	Enhancements for Upload/Download feature
73619	1.3	Enable mode was forcing alarms to be silenced
73654	1.4	Product enhancements as follows: 1) Extinguish Kiss-off LED when disabling communicator, address 56 set to zero. 2) Prohibit transmission of expanded reporting format. 3) Prohibit duplicate transmission of signals to secondary Central Station. 4) Store silence message in history file any time silence key is pressed. 5) Lock out false entries when setting the real time clock.
73720	1.5	Product enhancements as follows: 1) Entries '7' through 'F', corresponding to time delays of 15 to 23 hours, were added to the AC Loss Delay entry in Program Mode. 2) Eliminated Alarm Presignal and Alarm Verification in Slave Communicator Mode only.
73837	1.6	Allows high speed autobaud modems to connect to panel.
5024UDV20	2.0	Year 2000 enhancements.
5024UDV31	3.1	Upgrade software due to microprocessor manufacturer changes.
5024UDV40	4.0	Add Ademco Contact ID Communication Format
5024UDV41	4.1	Corrected Shurgard error, alternate phone lines for UL, changed defaults for 24 hour test time.
5024UDV42	4.2	Corrected Communications problems with Central Station. Modified AC Delay Time per UL 9th Edition.
5024UDV43	4.3	Change Ring Count default setting for Primary and Secondary Phone Lines to <b>00</b> .

## MS-5024UDE Software Changes

The following Table summarizes the MS-5024UDE software changes, specifying these changes by PROM Number and Release Number.

PROM #	Release #	Summary of Changes
73868	1.0	Initial Release
5024UEV20	2.0	Year 2000 enhancements.
5024UEV31	3.1	Upgrade software due to microprocessor manufacturer changes.
5024UEV40	4.0	Add Ademco Contact ID Communication Format.
5024UEV41	4.1	Corrected Shurgard error, alternate phone lines for UL, changed defaults for 24 hour test time.