

INNCOM DIRECT D-X47 HVAC CONTROLLER

Honeywell's INNCOM Direct is an energy management system tailored to provide an all-in-one control and management for a hotel's guestroom and common area HVAC systems.

Out of the box, INNCOM Direct DX47 controller is an essential part of Honeywell's online HVAC solution designed to reduce energy usage in guestroom and common area, enabling hoteliers to reach sustainability goals faster. Additionally, INNCOM Direct provides the capability for portfolio management to optimize room and equipment performance to increase guest satisfaction and decrease operational costs.

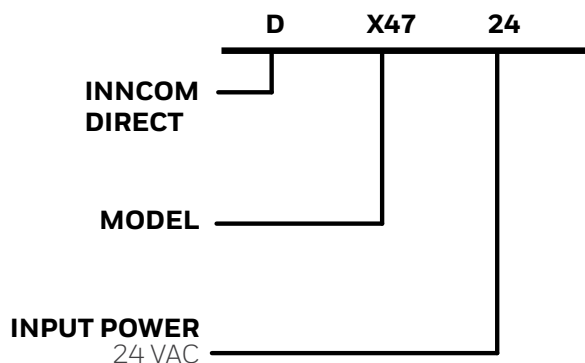
The DX47 provides five relay outputs and a range of digital and analog I/O to control a wide variety of light duty HVAC systems. The DX47 is the companion to the wireless D1-529-6V battery powered thermostat, and uses INNCOM's low cost, self-forming RF mesh network for wireless communications, fast setup, and easy maintenance.



FEATURES AND HIGHLIGHTS

- All-in-one system – both hardware and software
- Property wide – both guestrooms and common areas
- Occupancy and Scheduled Energy Savings
- No system engineering or commissioning experience needed.

PART NUMBERS



ORDERING PART NUMBERS

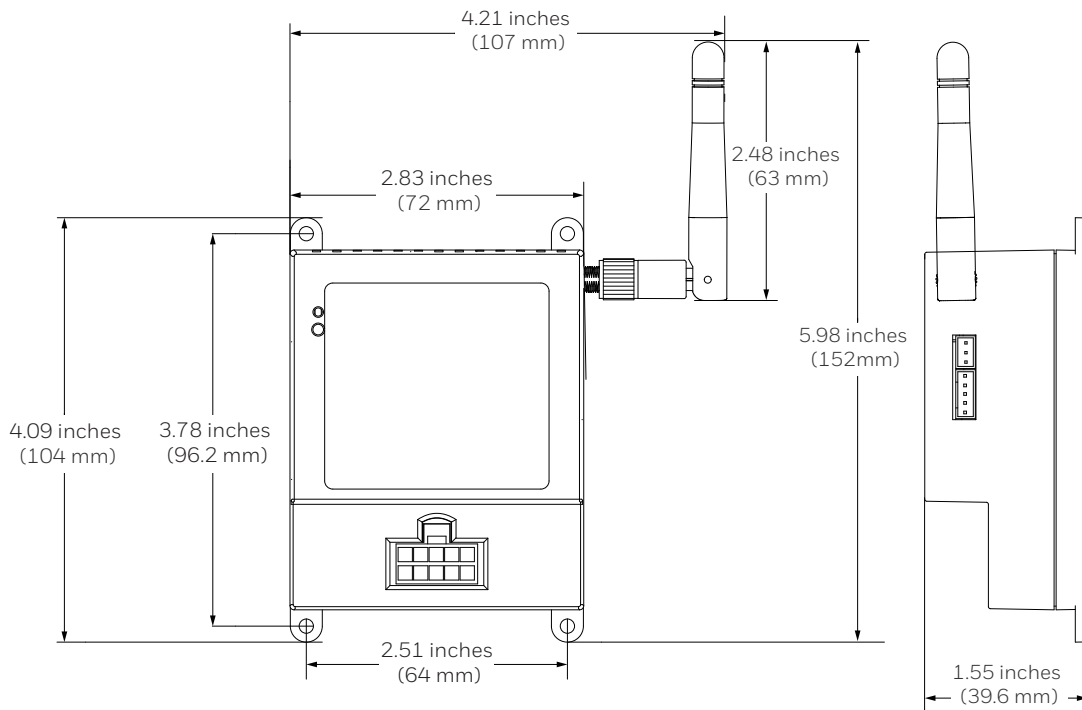
DX47 PART NUMBERS

| PART NUMBER | DESCRIPTION |
|-------------|-----------------------------|
| D-X47-24 | INNCOM DX47 HVAC Controller |

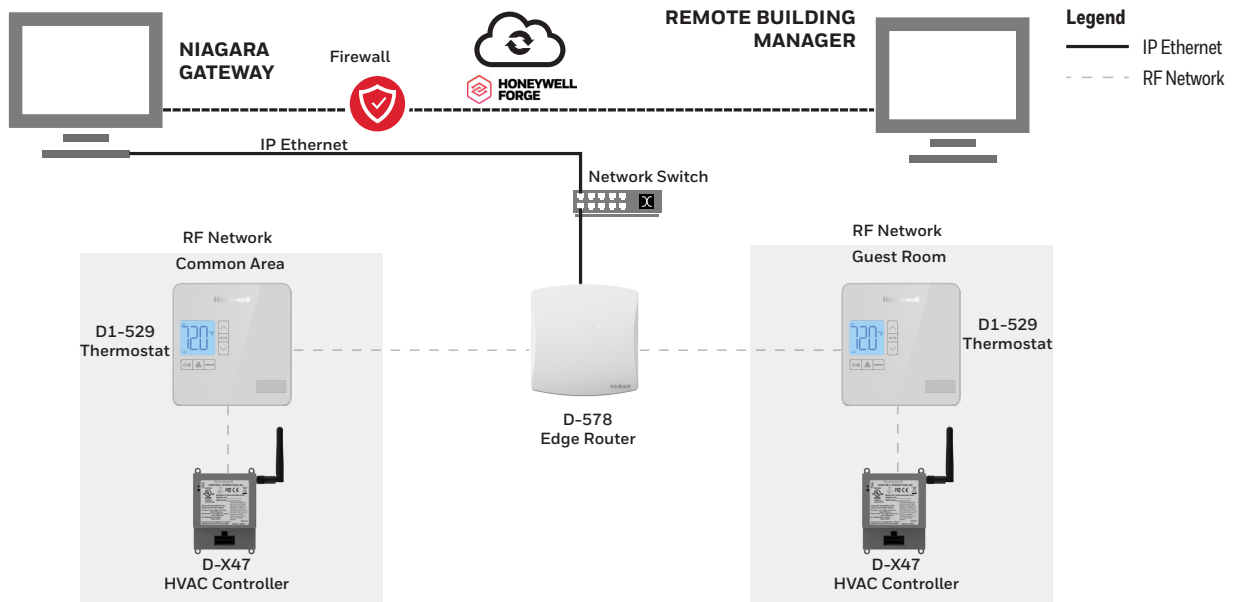
ACCESSORIES PARTS

| PART NUMBER | DESCRIPTION |
|-------------|---|
| 62-1511 | DX47 Low voltage harness (H2, H5) |
| 62-1465.B | DX47 Low voltage harness (H3, H4, H8, H9) |
| 62-1464.R | DX47 24 VAC Harness |
| 62-1467 | DX47 Low Voltage Cable |
| 13-4019 | ¼ wave antenna for 2.4 Ghz RF transceiver |
| 04-1095 | External ruggedized thermistor |

DIMENSIONS



SYSTEM OVERVIEW



PRODUCT SPECIFICATIONS

| ELECTRICAL | |
|-------------------------------|--|
| PARAMETER | SPECIFICATION |
| Input Power | 24 VAC 50/60 Hz, 2.4 VA |
| Class-2 Output (H9) S5bus I/O | 12 VDC 200 mA (The DX47 should not be used to provide more than 70 mA of external class-2 power) |
| RF Transmit Power | +18 dBm |
| RF Receive Sensitivity | -98 dBm |

| STANDARDS AND APPROVALS | |
|--|---|
| UL 244A and CSA C22.2 No. 14, file E231654 | |
| FCC ID: 2A8LT-24DX47 (FCC Part 15 subpart B and C class B) | |
| IC ID: 1609A-24DX47 | |
| Prop65 | |
| 2011/65/EU | Hazardous substances (RoHS I + II), amended by (EU) 2015/863 (RoHS III) |

| CURRENT CONSUMPTION | |
|---------------------|---|
| PARAMETER | DESCRIPTION |
| All relays actuated | 130 mA Maximum Load (including logic board) |

| ENVIRONMENTAL SPECIFICATIONS | |
|------------------------------|---|
| PARAMETER | SPECIFICATION |
| Operating Temperature | 32 °F to 104 °F (0 °C to 40 °C) 15 - 99 % RH |
| Storage Temperature | -40 °F to 158 °F (-40 °C to 70 °C) |

| WEIGHT AND DIMENSIONS | |
|------------------------|--|
| PARAMETER | SPECIFICATION |
| Dimensions (W x H x D) | 2.83 inches x 4.09 inches x 1.55 inches, 72 mm x 104 mm x 39.6 mm |
| Shipping Weight | 0.37 lbs (0.171 kg) |
| Mounting | 4 hole mounting 6/32" bit, 1/2" screw |

RELAY RATINGS

| RELAY | RELAY RATING | PIN ASSIGNMENT |
|----------|---|----------------|
| K1 | 1A sealed, 10A inrush, class 2 pilot duty | P4 |
| K2 | 1A sealed, 10A inrush, class 2 pilot duty | P5 |
| K3 | 1A sealed, 10A inrush, class 2 pilot duty | P10 |
| K4 | 1A sealed, 10A inrush, class 2 pilot duty | P7 |
| K5 | 1A sealed, 10A inrush, class 2 pilot duty | P6 |
| Common 1 | K1, K2, K3 | P9 |
| Common 2 | K4, K5 | P8 |

TYPICAL HVAC APPLICATIONS

| | 4 pipe, 3 fan, heat/cool FCU | 2 pipe, 3 fan, Cool only FCU | Heat Pump, 2 fan 2 nd stage heat | Heat pump, 3 fan speeds | PTAC, 2 Fan with heat strip |
|----|------------------------------|------------------------------|---|-------------------------|-----------------------------|
| K1 | High Fan | High Fan | High Fan | High Fan | High Fan |
| K2 | Medium Fan | Medium Fan | Medium Fan | Medium Fan | Medium Fan |
| K3 | Low Fan | Low Fan | Low Fan | Low Fan | Low Fan |
| K4 | Cool Signal | Cool Signal | Y-Compressor | Y-Compressor | Y-Compressor |
| K5 | Heat Signal | Not Connected | B/O Reversing Valve | B/O Reversing Valve | W-Heat |

WIRED COMMUNICATIONS & DIGITAL/ANALOG IO

| PIN | COLOR | TYPICAL FUNCTION |
|-----|--------|---------------------|
| 1 | Brown | Common |
| 2 | Red | 12 VDC Output/Input |
| 3 | Orange | S5bus Data |
| 4 | Yellow | Digital Input |
| 5 | Green | Not Connected |
| 6 | Blue | Not Connected |

WIRED EXTERNAL TEMPERATURE SENSORS

| | |
|-----------------------------------|--------|
| External temperature sensor input | H3, H4 |
|-----------------------------------|--------|

By using this Honeywell literature, you agree that Honeywell will have no liability for any damages arising out of your use or modification to, the literature. You will defend and indemnify Honeywell, its affiliates and subsidiaries, from and against any liability, cost, or damages, including attorneys' fees, arising out of, or resulting from, any modification to the literature by you.

Honeywell | Building Automation

715 Peachtree Street, N.E.,
Atlanta, Georgia, 30308,
United States
buildings.honeywell.com

@U.S. Registered Trademark
© 2024 Honeywell International Inc.
31-00719-01 | Rev. 06-24