

Customer Advice Note

CAN #179

Galaxy Flex

Jumper Settings

Date: June / 2023

Introduction

This Customer Advice Note details an issue with the Galaxy Flex and Jumper Settings.

A number of Galaxy Flex Systems have shipped with the PSU jumper **PL6** closed on the Control Unit PCB.

Products Affected

C005-L-E1, C005-L-E5, C006-L-E1, C006-L-E5, C007-L-E1, C007-L-E5, C007-A-SD, C015-L-E1, C016-L-E1, C017-L-E1

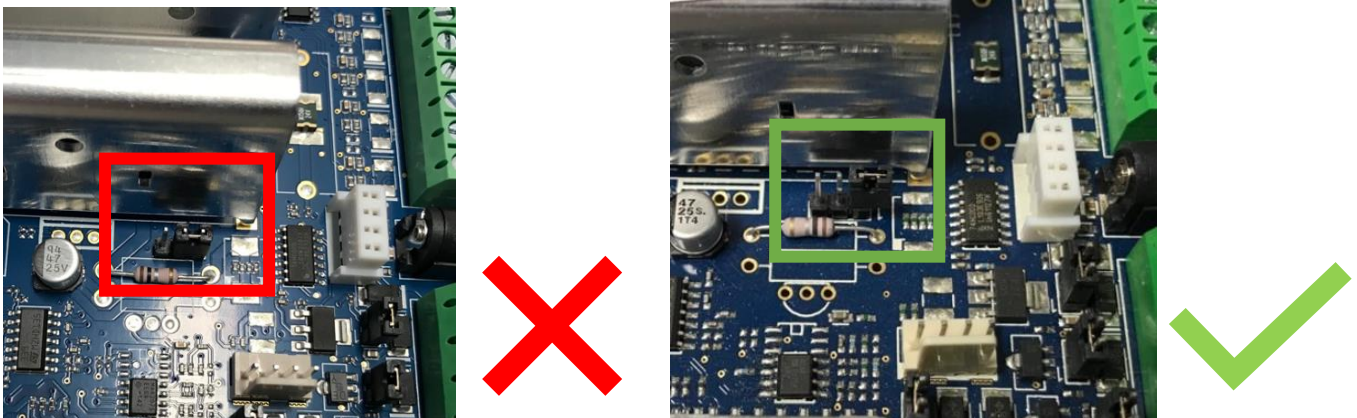
Identification

Product manufactured from **March 2022** to **May 2023** is affected.

Attention: Resolution

Remove the Galaxy Flex unit from the cardboard packaging. (Retain any fixings)

Locate the **PL6** Jumper on the PCB. This Jumper should be in an open position.



Please remove jumper and retain.

PL6 is used to limit AUX current for variant of PSU 2A / 1A

- Jumper open = 1.8 A
- Jumper closed = 0.9 A

This Jumper must be **Open** on 'L' models as they have a 2A PSU. All 'M' and 'S' models the Jumper is **Closed** as they have a 1A PSU.

Self Service Tech Support Portal

<https://myhoneywellbuildingsuniversity.com/training/support>

UK

E-mail: hsguktechsupport@honeywell.com

Tel: +44 1 344 238 266

Netherlands

E-mail: hsgnltechsupport@honeywell.com

Tel: +31 108 080 688

France

E-mail: hsgfrtechsupport@honeywell.com

Tel: +33 3 66 88 01 42

Spain

E-mail: hsgestechsupport@honeywell.com

Tel: +34 911 238 038

Italy

E-mail: hsgittechsupport@honeywell.com

Tel: +39 0399 301 301

Eastern Europe

E-mail: securityacademy@honeywell.com

Nordics

E-mail: hsgnortechsupport@honeywell.com

Tel: Norway: +47 80 05 44 68

Sweden +46 20 16 04 71

Denmark +45 80 81 03 15

Finland +441928378005

Impact

Hardware	y
Reporting	n
Standards and Legislation	n
Part Numbers Affected	y

Miscellaneous Changes	n
Signaling Changes	n
Technical Changes	n
Programming	n