

# KAC Audible Visible Range

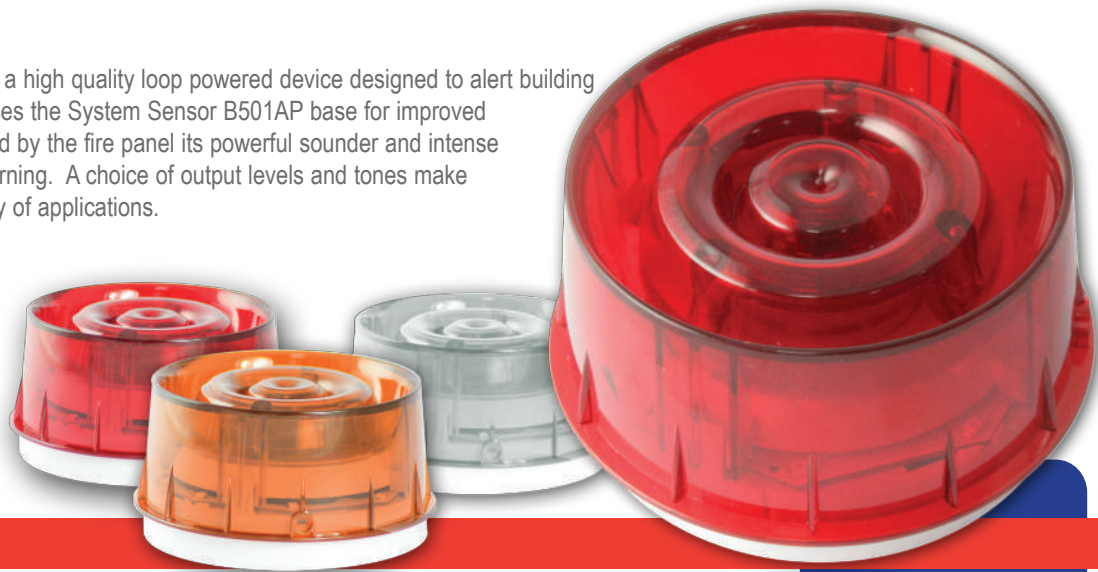
## Intelligent Wall Mount Sounder Strobe

### > Product Overview

KAC's wall mount sounder strobe is a high quality loop powered device designed to alert building occupants of an emergency. It utilises the System Sensor B501AP base for improved installation flexibility. When triggered by the fire panel its powerful sounder and intense strobe give a visible and audible warning. A choice of output levels and tones make the device suitable for a wide variety of applications.



+ EN54-23 approved



#### Faster installation

- Large cable access
- Rear or surface cable entry
- Loop continuity spring
- Automatic synchronisation of sounder and strobe

#### Flexible installation

- Low current draw enables more devices on loop
- Adjustable volume control (on device or from panel)
- Intense strobe output
- Deep and high IP base options
- A variety of body and lens colours

#### Reduced install errors and easy f

- Positive "poke yoke" engagement
- Address tag for clear indication
- Anti-tamper feature
- In-built isolation options
- Simple familiar rotary wheel address controls

#### Reduced full life costs

- High quality robust materials for longer life
- UV stable materials
- Robust construction for added impact resistance

#### Reduced inventory count

- Common base with detectors (B501AP)
- Device protocol is backward compatible through inclusion of both SS CLIP and Advanced Protocols
- 32 tone selection to cover many markets (on device or from panel)

#### Excellent system performance

- High efficiency piezo disk and horn profile generate excellent sound output
- High output LED technology and superior lens design optimize light output
- Advanced protocol enables controllable sound output, tone selection, independent sound and strobe function control and group polling

### > Applications



# KAC

WMSST

DS-AV-010\_o6

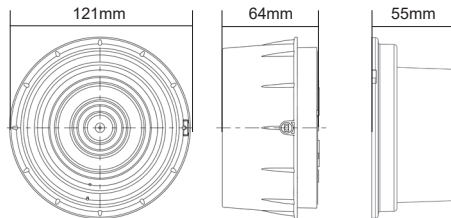
## Technical Overview

The KAC Wall Mount sounder strobe integrates a 32 tone sounder and high quality strobe into one device. It is powered by the fire panel via the loop wiring. Control of the device is enabled using on-board switches, some of which can also be adjusted through SS Advanced Protocol. The device is installed simply by a twist fit onto the B501AP base.

Supply Voltage:	15 to 29VDC (Non-isolation) 15 to 29VDC (Isolation)
Standby Current:	120µA (Non-Isolation) 225µA (Isolation)
Max current consumption sounder and strobe:	14.5mA (High Volume Tone 11 @15V)
Max Sound Output	97dB(A) +/-3dB @1metre (High Volume, Tone 8 @24V) [Tone Dependant - Figure stated is based on high volume 970Hz continuous @24VDC]
Strobe Flash Rate:	1Hz

## En

Operating Temp:	-25°C to 70°C
Relative Humidity:	Up to 95% non-condensing
Ingress Protection:	IP21C (with low profile base) IP44 (with surface mount base) IP65 (Waterproof base)



## Ordering Information

KAC has developed a product name/code which is as short and intuitive as possible while incorporating meaning and logic

Device	Code	Skirt Colour	Body or Lens colour	Isolation	Customer ID	Example
Wall mount sounder	WSO	P = pure white D = detector white (ivory)	<b>Body:</b> R = red P = pure white D = detector white (ivory) <b>Lens:</b> R = red A = amber C = clear	I = isolation N = non-iso	00 to 99	WSO-PR-I03
Wall mount strobe	WST					WST-PA-N14
Wall mount sounder strobe	WSS					WSS-PC-I02
Detector base sounder	BSO					BSO-PP-I04
Detector base strobe	BST					BST-PR-N31
Detector base sounder strobe	BSS					BSS-DA-N26

## Bases

B501AP - Low Profile Base

BRR, BDD, BPW - Surface mount deep base in red, detector white (ivory) or pure white

WRR, WDD, WPW - High IP surface mount deep base in red, detector white (ivory) or pure white

## Approvals

Approved to: EN54-3, EN54-17 where applicable and CPD/R

Clear lens:

This product is approved to EN54-23 as an Open Category device. Coverage details are available on the installation manual.

Red and Amber lens products:

These are not approved to EN54-23 (Visual Alarm Devices) and must not be used as a visual alarm device or to provide a primary warning notification of fire.

For RoHS, WEEE & REACH information please visit [www.kac.co.uk](http://www.kac.co.uk)

## Mechanical

Colour:	Pure White
Lens Colour:	Red, Clear, Amber <sup>#</sup>
Weight:	238g
Terminal Size:	1.5 - 2.5mm <sup>2</sup> max
Number of Tones:	32
Volume Setting:	High, Medium, Low
Mounting options:	Low Profile, Surface or High IP

<sup>#</sup> Lens availability dependant on order volume

**KAC**

> Learn More: [kac.co.uk](http://kac.co.uk)