

MB-SECURE PRO



Empower future applications and protect your existing installations

The MB-Secure PRO is a brand new panel, with redesigned enclosures and a new cellular module, that brings a strong renovation within the MB portfolio, making it futureproof and much more performant, while at the same time caring of a complete backward compatibility with all existing installations. No retrain is needed for installers and end users, as the functionalities and user interfaces remain the same.

The MB-Secure PRO provides a wider and better coverage of sites applications, by delivering features to increase security protection level, better performances and more scalability and flexibility (especially on access control side), with improvements on installation and configuration.

Increased security protection level by compliance to the latest VdS and EN standards, higher redundancy level and best in class cybersecurity protection is provided by more inputs / outputs, 2 ethernet ports, 2 communication ports on panel, latest technology crypto chip and ISA 62443-4-1 compliance. Better performances in terms of faster response time is ensured by a new microcontroller and more memory.

More scalability and flexibility (especially on access control side) is provided by extending the limit up to 30.000 users managed and the integration with the globally used access control software Pro-Watch 6.5.

Improvements on installation and configuration are ensured by simplified installation of the new cellular module, more space for peripherals in the enclosure, easier and more flexible management of licenses with the new license portal and full backward compatibility with all previous versions of MB panels, without the need to retrain engineers and end users.

FEATURES AND BENEFITS

- 5 pre-licensed basic variants
- Modular expandable through IB2/ BUS-2/Modulbus/BUS-1/AADP modules and participants
- Expandable via software licenses:
 - 512 areas
 - 4096 detector groups
 - 512 doors (BUS-2)
 - 30,000 users
 - 512 room/time zones
 - 2000 macros
 - 32 conventional doors
- Up to 10 touch control panels per BUS-2 connection or 50 in total
- Powerful macro functionality
- Extensive access control functions such as office release, area change control, or access relock, also with IQ MultiAccess / IQ SystemControl
- Integration with Pro-Watch (from V6.5x)
- Integrated alarm transmission for connection to monitoring centers with up to 2 Ethernet and 2 LTE/4G via:
 - VdS SecurIP
 - VdS 2465
 - SIA DC-09

- Remote control/parameterization via TCP/IP or USB with IQ PanelControl
- Remote service and installer test mode via web interface, even on mobile devices
- Integration plus WINMAG (from V6.7)
- Connection server via TCP/IP
- SNMP license option
- Third-party integration via TCP/IP
- Arming/disarming or access control using proX, LEGIC, or encrypted mifare DESFire credentials
- Optional encrypted communication between reader and panel
- Freely programmable inputs and outputs, including termination resistance and sensitivity
- Remote power supplies (via BUS-2)
- 256 wireless devices on BUS-2, including up to 32 RF panic buttons
- Integration of ASSA Aperio cylinders and fittings
- Integration of a mobile app with push functionality

Connections on all motherboards:

- 4 electronically protected BUS ports, switchable
 - BUS-2
 - IB2
 - Modulbus/RS-485
 - AADP
- 2 Fast Ethernet ports (10/100) with RJ-45
- 2 USB-Ports for LTE/4G or parametrization IQ PanelControl / Firmware-Update
- 8 conventional detector group inputs with reset function
- 8 semiconductor outputs active 12 V DC/50 mA
- 2 relays 30 V DC / 4 A

- Event log for up to 30,000 events
- Firmware updates via USB stick
- Custom text entries with up to 50 characters for areas, detector groups, users, inputs, outputs, room/time zones
- Reduced material costs for larger and integrated systems
- Lower installation costs due to high integration levels
- One common user database:
 - Lower operational costs
 - Reduced risk of errors
- Scalable from small to enterprise-wide applications
- Integratable into IT systems, e.g., data centers
- Optional TLS 1.2-encrypted networking for up to 8 panels, each with 8 virtual inputs/outputs, and shared alarm communication

Honeywell

MB-SECURE PRO LICENSING

SCALABILITY THROUGH LICENSING

The modular security platform MB-Secure PRO offers various configuration, integration, and expansion possibilities. For the appropriate assembly of the required license keys, the also **revised** licensing portal serves: <https://mb-secure.honeywell.de>

In this portal, the acquired licenses are linked with their **key codes** to the respective MB-Secure PRO boards based on their serial numbers. This generates a license key that can be downloaded or sent via email. After subsequently downloading the generated license key (via IQ PanelControl) to the respective MB-Secure PRO board, the desired functionality is activated.

MORE FLEXIBILITY THROUGH KEY-CODES

All licence options such as areas, users or communication protocols are assigned 16-digit number sequences (**key codes**), which are automatically sent by e-mail upon purchase.

Licence files for the systems are created in the portal by linking the serial numbers of the circuit board and the respective key code of the licence.

This enables both the configuration of new circuit boards and their peripherals, as well as extensions to existing systems.

The new procedure with key codes allows **easy transfer of licence options** between several branches of an installer company or even from installer to installer.

This concept also eliminates the need to transfer boards between installers, and the **board-specific PIN** provides access protection.

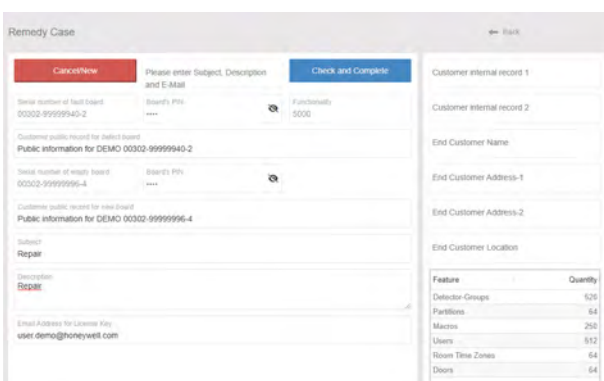
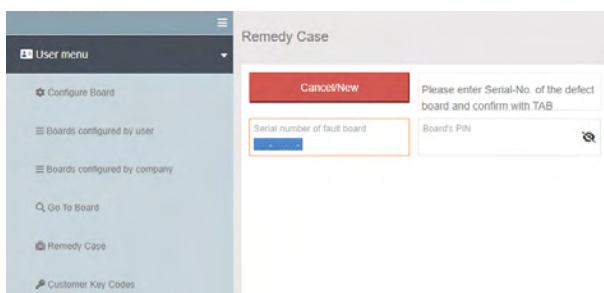
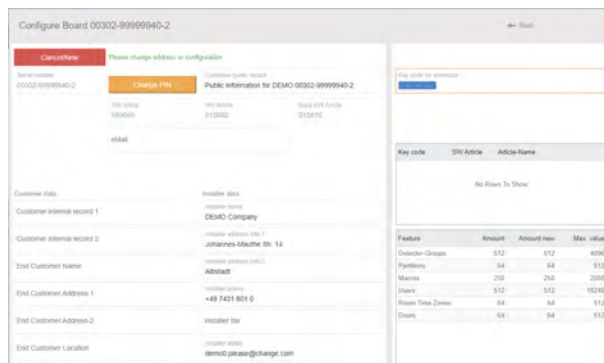
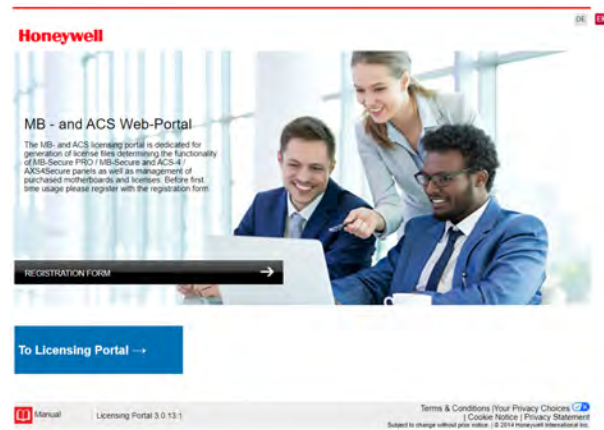
However, this expansion of the functionality can not only be done on new systems, but is also possible for existing systems at any time. This means that the MB-Secure PRO can be adapted to changed circumstances (e.g. structural extension or conversion of the building) without having to replace the panel board.

Stock levels and stock movements can be clearly viewed and a history is available for the previous and current life history of an MB-Secure / MB-Secure PRO motherboard. **Improved user administration** with different authorisation settings and reporting forms for software enhancements and errors, support the new licensing portal.

REDUCED COST THROUGH LESS STOCK

The licensing portal is particularly useful in the event of damage or failure of an MB-Secure / MB-Secure PRO panel. A special "Emergency" menu option is available for this purpose, which can be used to easily duplicate existing licences on existing replacement boards. This even makes it possible to **transfer licences from an MB-Secure to an MB-Secure PRO**.

This method allows for significantly lower stock levels, as only one MB-Secure PRO base board, item no. **MB-PRO4000BASE**, needs to be kept in stock for servicing.



MB-SECURE PRO IQ PANELCONTROL, REMOTE SERVICE, CONNECTION SERVER

COMMISSIONING WITH IQ PANELCONTROL

The entire programming of the MB-Secure control panel is created using the **backwards-compatible** IQ PanelControl programme package. This enables quick and clear programming of the MB-Secure PRO, as well as convenient saving and printing of the created control panel programming by means of an integrated object and system database, thus enabling the system documentation to be carried out. A wide range of programming aids such as automatic BUS-2 devices detection, wireless user installation mode and various wizards allow time-effective programming of the alarm panel. For example, it is possible to automatically **check the completeness** of the programming and to **move entire BUS strings**. Furthermore, the complete event memory of the control panel can be read out, displayed in **colour detail** and printed out. IQ PanelControl not only enables the MB-Secure/PRO to be programmed, but also allows certain user groups or individual users to be conveniently assigned individual rights via the user administration, e.g. to view events and operating statuses. Direct access to service functions is also integrated so that all necessary settings can be made from one application.

REAL SINGLE PERSON INSTALLER TEST MODE

This is provided by a built in web browser application to support installation and maintenance. It supports the individual test of all partitions, detector groups and their inputs, outputs, doors, macros, power supplies and communicators. Additional to this, all activities can be recorded in a separate protocol file. A list of untested inputs and a printing option for maintenance reporting is included too.

REMOTE SERVICE THROUGH WEB SERVER

Through the built-in web server, installers can access the MB-Secure remotely for the quick detection of operating conditions and events, for immediate troubleshooting help and to provide support for the operator.

CONNECTIVITY THROUGH CONNECTION SERVER

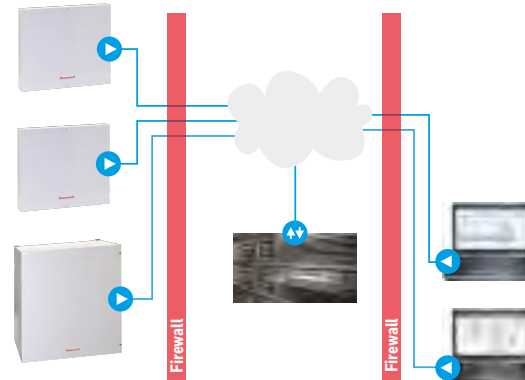
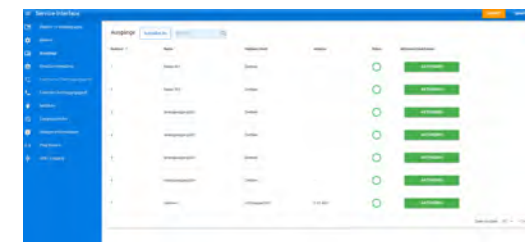
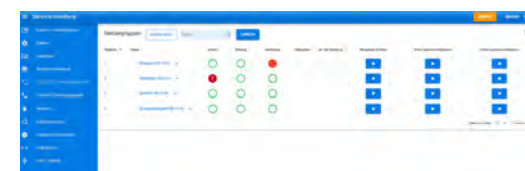
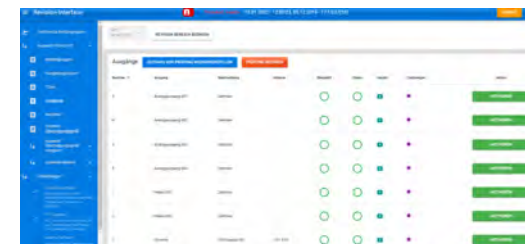
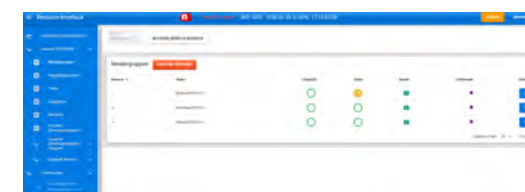
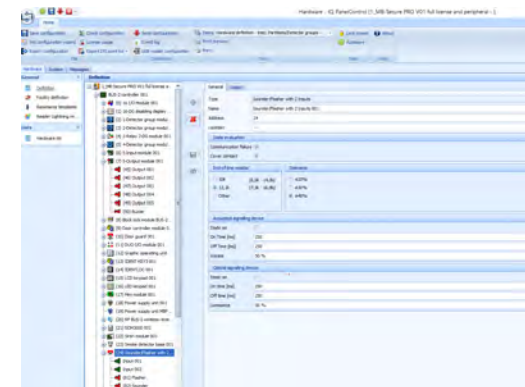
Through the license option "Connection server", a secure remote service and remote programming access via IP networks is provided by using an individual server that can be individually configured and operated e.g. in the installer premises.

This is supported by "MB-Connector", which is included as installation option of IQ PanelControl. With this no fixed IP for MB-Secure or DDNS services are necessary and the systems can be operated seamlessly behind firewalls.

Also the installer test mode can be used with the connection server, by using this together with a mobile device e.g. a tablet with internet access the system can be operated and tested efficiently and from anywhere.

OPERATION BY MOBILE APP

The license option „mobile app“ allows access to the MB-Secure via a mobile app (iOS or Android), for control and operation through the end customer with powerful push notification function (connection server required). Therefor exists an extensive user-specific access control in MB-Secure. The access via fixed IP or optionally via connection server is also possible.



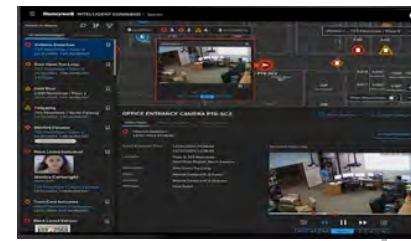
MB-SECURE PRO INTRUSION DETECTION

MB-SECURE PRO		2000		4000		8000		MAX.	
Scalable flexible modular									
DETECTOR GROUPS (ZONES)	16	48	128	512	2048	4096			
PARTITIONS	2	4	16	64	256	512			
ROOM / TIMEZONES	8	16	32	64	256	512			
USERS	32	64	128	512	1024	30000			
MACROS	20	30	50	250	1000	2000			
DOORS	2	4	16	64	256	512			

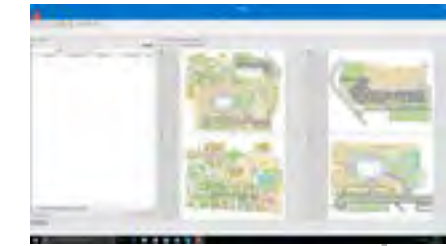
One panel – four bus systems

Thanks to the 4 multifunctional BUS connections, the MB-Secure PRO adapts perfectly to all installation environments. Each connection can be configured separately to one of the four possible protocols and operating modes:

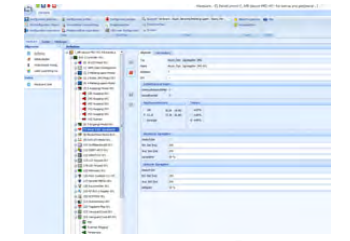
- **BUS-2** for up to 64 BUS-2 devices
- **IB2** for up to 10 IB2 BUS extensions each with 4 additional BUS-2 branches
- **Modulbus/RS-485** for readers and I/O modules
- **AADP/RS-485** for connection to Aperio RS-485 HUB



Pro-Watch

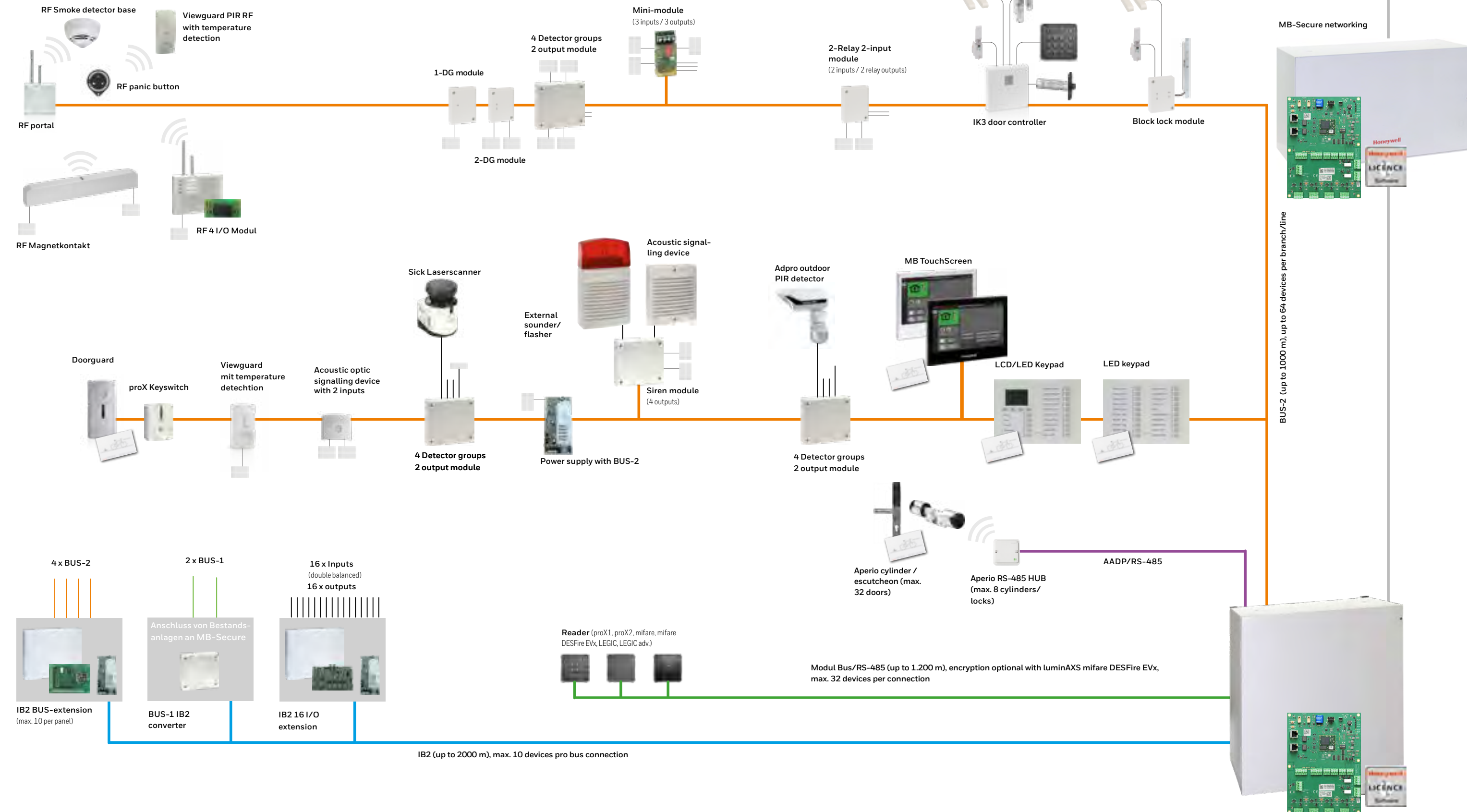


WINMAG plus management-system



IQ PanelControl

TCP/IP-network



MB-SECURE PRO ACCESS CONTROL

MB-SECURE PRO		3000		4000		5000		6000		MAX.	
Scalable flexible modular											
DETECTOR GROUPS (ZONES)	16	48	128	512	2048	4096					
PARTITIONS	2	4	16	64	256	512					
ROOM/TIMEZONES	8	16	32	64	256	512					
USERS	32	64	128	512	1024	30000					
MACROS	20	30	50	250	1000	2000					
DOORS	2	4	16	64	256	512					

One panel - four bus systems

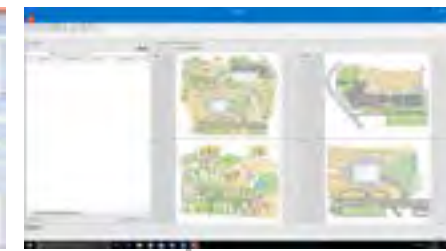
Thanks to the 4 multifunctional BUS connections, the MB-Secure PRO adapts perfectly to all installation environments. Each connection can be configured separately to one of the four possible protocols and operating modes:

- **BUS-2** for up to 64 BUS-2 devices
- **IB2** for up to 10 IB2 BUS extensions each with 4 additional BUS-2 branches
- **Modulbus/RS-485** for readers and I/O modules
- **AADP/RS-485** for connection to Aperio RS-485 HUB

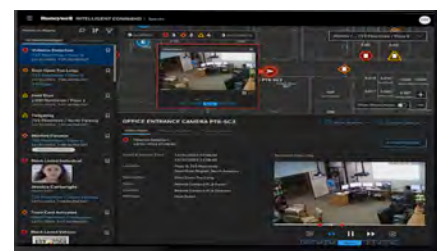
Enrollment station for contactless biometric identification



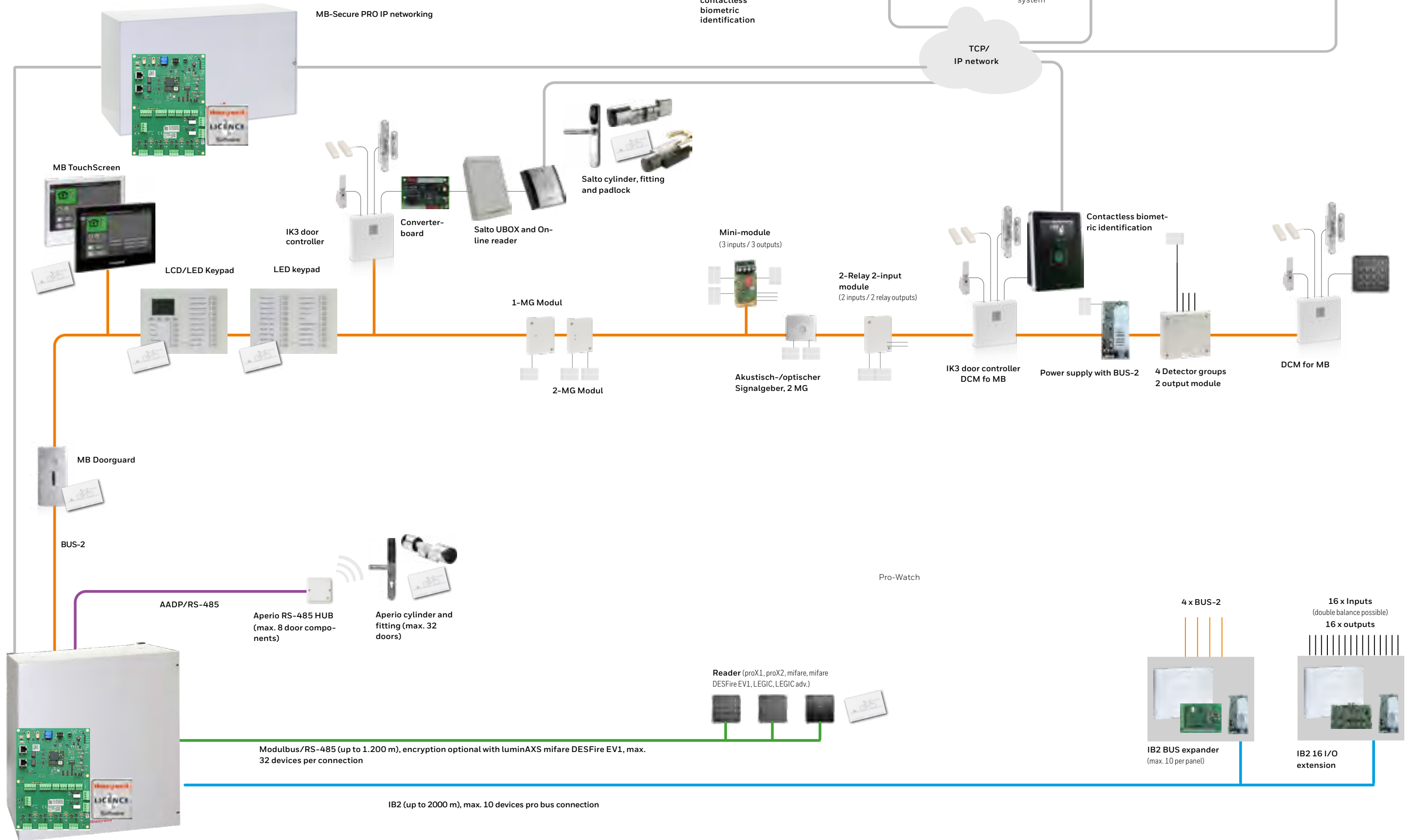
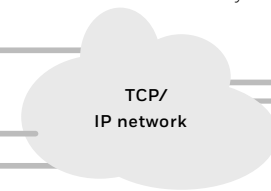
IQ MultiAccess/
IQ SystemControl



WINMAG
Management-
system



Pro-Watch



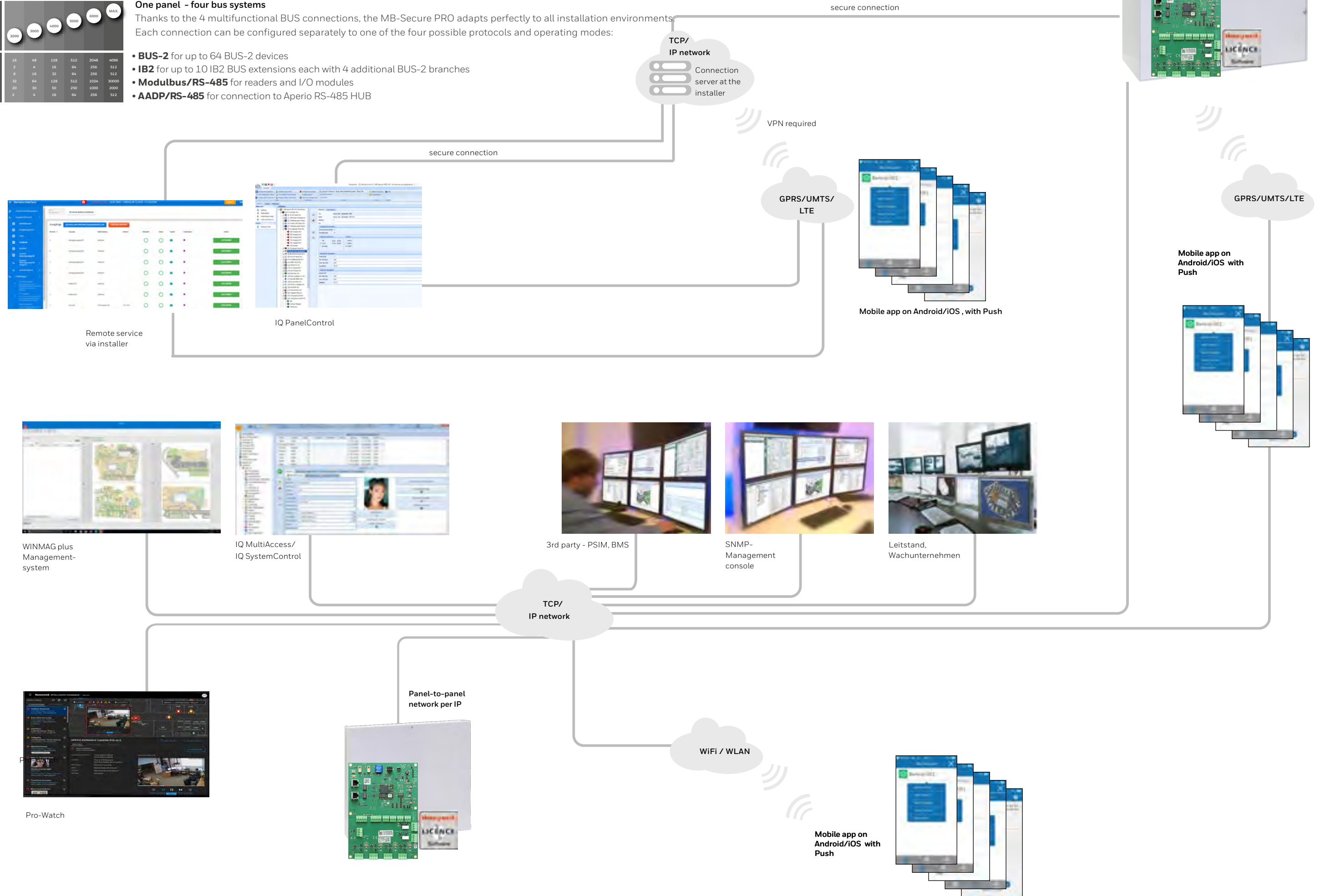
MB-SECURE PRO IP CONNECTIVITY

MB-SECURE PRO		2000		3000		4000		5000		6000		MAX.	
Scalable, flexible, modular													
DETECTOR GROUPS (ZONES)	16	48	128	512	2048	4096							
PARTITIONS	2	4	16	64	256	512							
ROOM/TIMEZONES	8	16	32	64	256	512							
USERS	32	64	128	512	1024	30000							
MACROS	20	30	50	250	1000	2000							
DOORS	2	4	16	64	256	512							

One panel - four bus systems

Thanks to the 4 multifunctional BUS connections, the MB-Secure PRO adapts perfectly to all installation environments. Each connection can be configured separately to one of the four possible protocols and operating modes:

- **BUS-2** for up to 64 BUS-2 devices
- **IB2** for up to 10 IB2 BUS extensions each with 4 additional BUS-2 branches
- **Modulbus/RS-485** for readers and I/O modules
- **AADP/RS-485** for connection to Aperio RS-485 HUB



Remote service via installer

IQ PanelControl

Mobile app on Android/iOS, with Push

Mobile app on Android/iOS with Push

WINMAG plus Management-system

IQ MultiAccess/ IQ SystemControl

3rd party - PSIM, BMS

SNMP-Management console

Leitstand, Wachunternehmen

TCP/IP network

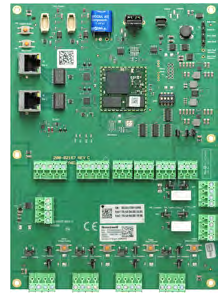
Panel-to-panel network per IP

WiFi / WLAN

Mobile app on Android/iOS with Push

Pro-Watch

MB-SECURE PRO BASE VARIANTS



MB-PRO4000BASE MB-Secure PRO base board VdS approval G123002, Class C; EN 50131 Grade 3, SES-EMA-RL-T2:2021-04

Computer board with firmware.

In addition, one of the base licenses item no. 059510, 059520, 059530, 059540, 059550 or 059560 must be ordered. Subsequent upgrade using extension licenses is possible at any time. Computer / connection PCB, assembly and installation material, IQ PanelControl programming software.



SAME AS MB-PRO4000BASE BUT INCLUDING BASE LICENSES AND FEATURES

SKU	Detector Groups	Partitions	Doors	Users	Room/Timezones	Macros
MB-PN002 MB-Secure PRO 2000	16	2	2	32	8	20
MB-PN003 MB-Secure PRO 3000	48	4	4	64	16	30
MB-PN004 MB-Secure PRO 4000	128	16	16	128	32	50
MB-PN005 MB-Secure PRO 5000	512	64	64	512	64	250
MB-PN006 MB-Secure PRO 6000	2048	256	256	1024	256	1000

EXPANSION MODULES



MB-PROCLTEE MB-Secure PRO LTE-Modem

LTE/UMTS/GPRS modem for MB-Secure PRO

Enables VdS-compliant connection/communication to alarm receiving centres. SMS or e-mail transmission in conjunction with licence option 059830. **Up to two LTE modems** can be connected to an MB-Secure PRO; installation takes place on the inside of the housing and does not take up any module mounting space on the rear panel. By using a second LTE modem, a second IP transmission path can be implemented for the connection and transmission of messages to a receiving centre (security company) or a connection, e.g. to WINMAG plus, IQ MultiAccess, IQ PanelControl and the WEB interface, also via a separate IP network.

013930 IB2 Bus Expander

For adding additional BUS 2 strands /lines.

The connection is made via the IB2 bus, installation is in the panel housing or remotely at a distance of up to 2000m.

4 independent and individually fused BUS-2 connections with up to 64 devices each, up to **256 BUS-2 devices** per module.



013940.10 IB2 16 I/O Expander

For adding additional detector zone inputs and semiconductor outputs.

The connection is made via the BUS-2 or IB2 bus, installation is in the control panel housing or remotely at a distance of up to 1000m or 2000m.

With 16 resettable detector zone inputs in multi-balanced technology for monitoring alarms, faults, tampering and line breakage via a two-wire line. Each input can optionally be configured separately as an output. Furthermore, 16 freely programmable active-high semiconductor outputs with 12 V 50 mA are available, e.g. for activating relays such as the 013941.



013941 Relay module 4x230V/8A, 8x24V/1A

Additional relay board for expansion. Activation is via active 12 V signals, e.g. from an IB2 16 I/O extension Art. 013940 or from the connection board of an MB



- GSM / GPRS / UMTS / LTE transmission
- Complies with EN 50136-1 and VdS 2311 :2017-04
- Supports SecurIP (VdS 2465-2 : 2018-02 and VdS 2465-3 : 2018-03)
- Supports 2471-S1 SP4 and DP4
- SIM card holder
- SMA antenna connections
- USB connection to MB-Secure PRO
- 14-pin control cable
- Fits in all MB-Secure PRO housings
- Supplied dual antenna can be mounted in housing
- Optional remote antennas can be connected
- LEDs for status display

- IB2 BUS connection to MB-Secure
- Up to 10 extension modules possible
- 4 BUS connections for a total of up to 256 BUS-2 devices
- 4 conventional detector zone inputs, 1 with cancelling device

- IB2-BUS / BUS-2 connection to MB-Secure
- Maximum distance for IB2-BUS operation 2000m, for BUS-2 operation 1000m
- 16 conventional zone inputs in multi-balanced technology with reset function
- Zone inputs alternatively switchable to active-low output
- 16 semiconductor outputs active 12 V DC
- 1 digital input for tamper contact
- Connection for external 12 V power supply
- 3 LEDs for displaying system statuses

- - 8 relays with 24 V / 1 A
- - 4 relays with 250 V AC / 8 A
- - Potential-free changeover contact in each case
- - Activation with 12 V 50 mA
- - Compatible with all MB panels

MB-SECURE / PRO LICENSE OPTIONS

Note: All currently available licence options are applicable to MB-Secure and MB-Secure PRO, with the exception of MB-LC001 licence option 5,000 users

Part. No	Name	Description	Max. per panel
Base licenses			
059510	MB-Secure/PRO 1000 base license	For putting a base board into operation	1 piece
059520	MB-Secure/PRO 2000 base license	For putting a base board into operation	1 piece
059530	MB-Secure/PRO 3000 base license	For putting a base board into operation	1 piece
059540	MB-Secure/PRO 4000 base license	For putting a base board into operation	1 piece
059550	MB-Secure/PRO 5000 base license	For putting a base board into operation	1 piece
059560	MB-Secure/PRO 6000 base license	For putting a base board into operation	1 piece
Extension Licenses			
059620	MB-Secure/PRO license 2 areas	Expands an MB-Secure/PRO by 2 areas	512 areas
059621	MB-Secure/PRO license 16 areas	Expands an MB-Secure/PRO by 16 areas	512 areas
059622	MB-Secure/PRO license 64 areas	Expands an MB-Secure/PRO by 64 areas	512 areas
059670	MB-Secure/PRO license 2 doors	Expands an MB-Secure/PRO by 2 doors (for IK3/Doorguard/DCM)	512 doors
059671	MB-Secure/PRO license 16 doors	Expands an MB-Secure/PRO by 16 doors (for IK3/Tagalarm plus/ZK door module BUS-2)	512 doors
059672	MB-Secure/PRO license 64 doors	Expands an MB-Secure/PRO by 64 doors (for IK3/Tagalarm plus/ZK door module BUS-2)	512 doors
059650	MB-Secure/PRO license 16 users	Expands an MB-Secure/PRO by 16 users	30,000 users
059651	MB-Secure/PRO license 64 users	Expands an MB-Secure/PRO by 64 users	30,000 users
059652	MB-Secure/PRO license 512 users	Expands an MB-Secure/PRO by 512 users	30,000 users
MB-LC001	MB-Secure PRO license 5000 users	Expands an MB-Secure PRO by 5,000 users (only for MB-Secure PRO)	30,000 users
059610	MB-Secure/PRO license 8 detector groups	Expands an MB-Secure/PRO by 8 detector groups.	4,096 zones
059611	MB-Secure/PRO license 64 detector groups	Expands an MB-Secure/PRO by 64 detector groups	4,096 zones
059612	MB-Secure/PRO license 512 detector groups	Expands an MB-Secure/PRO by 512 detector groups	4,096 zones
059630	MB-Secure/PRO license 10 macros	Expands an MB-Secure/PRO by 10 macros	2,000 macros
059631	MB-Secure/PRO license 50 macros	Expands an MB-Secure/PRO by 50 macros	2,000 macros
059632	MB-Secure/PRO license 250 macros	Expands an MB-Secure/PRO by 250 macros	2,000 macros
059660	MB-Secure/PRO license 4 room/time zones	Expands an MB-Secure/PRO by 4 room/time zones	512 room/time zones
059661	MB-Secure/PRO license 16 room/time zones	Expands an MB-Secure/PRO by 16 room/time zones	512 room/time zones
059662	MB-Secure/PRO license 64 room/time zones	Expands an MB-Secure/PRO by 64 room/time zones	512 room/time zones
059680	MB-Secure/PRO license 1 hardwired door	Conventional door with readers (Insertic/Siedle/Accentic/luminAXS) Modulbus/RS-485. Max. two readers (input/output) per door, no IK3/ZK door module required.	32 conv. Doors
059685	MB-Secure/PRO option Assa Aperio door	Expands an MB-Secure/PRO with a wireless door that can be connected to ASSA Aperio wireless cylinders or fittings via an APERIO Hub RS-485 AP-0120 connected to the MB-Secure/PRO	32 Aperio doors
059820	MB-Secure/PRO option 3rd party level 1	Enables the connection of third-party systems via TCP/IP. - Partition states and events - Detector group states and events - Macro control	1 piece
059821	MB-Secure/PRO option 3rd party level 2	Enables the connection of third-party systems via TCP/IP. - Partition states and events - Detector group states and events - Detector/input states and events - Macro control - Outputs can be controlled directly	1 piece
059822	MB-Secure/PRO option 3rd party level 3	Enables the connection of third-party systems via TCP/IP. - Partition states and events - Detector group states and events - Detector/input states and events - Macro control - Outputs can be controlled directly - Event streaming - AC information (user etc.); user management NOT supported	1 piece
059830	MB-Secure/PRO option for IP VdS2465 100 K.	For connection/communication to CMS via VdS IP protocol.	1 piece
059831	MB-Secure/PRO option for SIA DC-09	For connection/communication to CMS via SIA DC-09 (Contact-ID) protocol.	1 piece
059832	MB-Secure/PRO option SNMP protocol	Monitoring/control via SNMPv2c	1 piece
059840	MB-Secure/PRO option connection server	For coupling up to two "MB-Connector" connection servers. For secure remote access to service and programming functions via IP networks as well as to the app's push function. MB-Connector is included as an installation option in IQ PanelControl. The prerequisite is a PC that can be accessed from the Internet.	1 piece
059842	MB-Secure/PRO option panel network	For TLS 1.2 - encrypted coupling and monitoring of up to 8 MB-Secure/PRO control panels, each with 8 inputs/outputs. Optional coupling for alarm transmission possible, with the "IP VdS 100 channels option" an integrated transmission device of an MB-Secure/PRO can be shared with other control panels in a control panel network (up to 8).	1 piece
059845	MB-Secure/PRO option mobile app	Allows access to the MB-Secure/PRO via a mobile app (iOS or Android) including a push function for operation and control by the operator. Connection directly or via the connection server.	1 piece
059825	MB-Secure/PRO option mifare DESFire Param.	Enables the use of non-system mifare DESFire data carriers on which encrypted applications are programmed by the customer, e.g. employee ID cards.	1 piece
059826	MB-Secure/PRO Opt. Module bus encryption	Enables encrypted communication to luminAXS mifare DESFire readers, as required in high security applications. The readers must be connected directly to the MB-Secure/PRO computer board via module bus/RS-485. License option 059680 is also required for each conventional door.	1 piece
059847	MB Secure/PRO Option Notification	Enables the sending of SMS and email with free text modules.	1 piece
059848	MB-Secure/PRO option email event report	Enables the automated sending of predefined event reports via email, which can be triggered by a macro, e.g. by daily arming, a keystroke or a room-time zone. These can be sent to any email recipient, such as people or web-enabled printers.	1 piece

OPTIONS/ACCESSORIES

Part. No	Name	Description	VdS approval	EN grade
MB-PRO4000BASE	MB-SECURE PRO MOTHERBOARD	Computer board with firmware, base license 0595xx required	CL C	Gr. 3
MB-PN002	MB-SECURE PRO 2000	Computer board with firmware, functionality MB-Secure PRO 2000	CL C	Gr. 3
MB-PN003	MB-SECURE PRO 3000	Computer board with firmware, functionality MB-Secure PRO 3000	CL C	Gr. 3
MB-PN004	MB-SECURE PRO 4000	Computer board with firmware, functionality MB-Secure PRO 4000	CL C	Gr. 3
MB-PN005	MB-SECURE PRO 5000	Computer board with firmware, functionality MB-Secure PRO 5000	CL C	Gr. 3
MB-PN006	MB-SECURE PRO 6000	Computer board with firmware, functionality MB-Secure PRO 6000	CL C	Gr. 3
MB-PROCLTEE	MB-PRO INT LTE MODULE EMEA	LTE / 4G modem for integration, including dual antenna	CL C	Gr. 3
013730.10	ZG20 HOUSING FOR MB-SECURE/PRO	Sheet steel housing for MB-Secure/PRO for 18Ah, 2 modules, 2 LTE	CL C	Gr. 3
013750.10	ZG3.1 HOUSING FOR MB-SECURE/PRO	Sheet steel case with swing door for MB-Secure/PRO for 52 Ah, 2 modules, 2 LTE	CL C	Gr. 3
013760.10	ZG4 HOUSING FOR MB-SECURE/PRO	Sheet steel case with swing door for MB-Secure/PRO for 130Ah, 8 modules, 2 LTE	CL C	Gr. 3
055280	DUAL LOCK, FLEXIBLE PRESS LOCK	Incl Velcro strap for attaching the battery in VdS systems with ZG3.1 and ZG4	Accessory	-
013950	PSU 26AH FOR MB-SECURE/PRO	BUS-2, one battery supported, 050510 required	CL C	Gr. 3
013960	PSU 52AH FOR MB-SECURE/PRO	BUS-2, two batteries supported, 050510 required	CL C	Gr. 3
013970	PSU 18AH 1,5A	For ZG20 housing, without VdS	-	Gr. 2
050510	NETWORK INTERFERENCE SUPPRESSION FILTER	Required for power supplies 013950 and 013960	Accessory	-
013920	SIREN MODULE BUS-2 FOR MB-SECURE	For operating acoustic/optical signaling devices, for 048720.17 etc.	CL C	Gr. 3
013925	MB-SECURE/PRO BUS-1 IB2 CONVERTER	For connecting BUS-1 modules, 2 x 63 BUS-1 devices	-	-
013930	IB2 1TO4 BUS EXPANDER	For expansion with 4 additional BUS-2 lines, a total of 4 x 64 BUS-2 devices	CL C	Gr. 3
013940.10	IB2 16 I/O EXPANDER	For 16 additional DG inputs and 16/32 outputs, relay card 013941 opt.	CL C	Gr. 3
010120.17	DUO I/O MODULE BUS-2/BUS-1, F. M.	Detector group module, 4DG/20, flush-mount, 4 LEDs for display in the cover	CL C	Gr. 2
010128	2 DG MODULE F. M. BUS-2/BUS-1	2-zone module BUS-2/BUS-1, flush-mount, 2 LEDs for display in the cover	CL C	Gr. 2
010130.10	4DG/20P MODULE BUS-2/BUS-1 S.M.	With surface mount housing, 4 LEDs in cover	CL C	Gr. 3
010134.10	1 DETECTOR GROUP MODULE BUS-2/BUS-1,S.M.	1 detector group module BUS-2/BUS-1 in surface mount housing, 1 LED for in cover	CL C	Gr. 3
010135.10	2 DETECTOR GROUP MODULE BUS-2/BUS-1,S.M.	2-zone module BUS-2/BUS-1 in surface mount housing, 2 LEDs in cover	CL C	Gr. 3
013000	LED KEYPAD, WHITE, F. MB-SECURE	With proX reader, 15 MG keys, freely programmable buttons and LEDs	CL C	Gr. 3
013001	LED/LCD KEYPAD, WHITE, F. MB-SECURE	With proX reader, 20 MG keys, freely programmable buttons and LEDs	CL C	Gr. 3
013080	MB TOUCHSCREEN CONTROLPANEL,WT	White, mifare+proX reader integrated, universal installation sm and fm	CL C	Gr. 3
013081	MB TOUCHSCREEN CONTROLPANEL,BL	Black, mifare+proX reader integrated, universal installation sm and fm	CL C	Gr. 3
013133	MINI-MODULE, BUS-2	For integration into detector housing, 3 inputs + 3 outputs.	-	-
015600.01	RF BUS-2-COUPLER,MB-WIRELESS	For up to 16 devices of MB wireless system	CL B	-
022325.10	BLOCKLOCK MODULE BUS-2/BUS-1 S.M.	In surface mount housing, for connecting conventional switches for arm/disarm	CL C	-
023312.17*	IK3 DOOR CONTROLLER BUS-2	obsolete Mar24 Door module f. arm/disarm/AC, DG inp., locking elem. + door str. cntl	CL C	-
023350.17*	DOOR CONTROLLER MODULE FOR MB	obsolete Mar24 Door module for AC, DG inputs, door strike control	CL C	-
MB-DC001*	DOOR CONTROLLER MODULE FOR MB/ACS*	Available Jan 2024 - Door module f. arm/disarm/AC, DG inputs, locking el. + door str. cn	CL C	Gr. 3
033332.21	VIEWGUARD PIR BUS-2/BUS-1	PIR motion detector with DG input, optional Mirror set for curtain or longrange	CL B	Gr. 2
033432.21	VIEWGUARD PIR AM BUS2/BUS1	PIR-AM motion detector with DG input, opt. Mirror set for curtain or longrange	CL C	Gr. 3
033442.21	VIEWGUARD DUAL AM BUS2/BUS1	Dual AM motion detector with DG input	CL C	Gr. 3
033443.21	VIEWGUARD DUAL BUS2/BUS1	Dual motion detector with DG input	CL B	Gr. 2
041220	2-RELAY 2-INPUT MODULE BUS-2	2 relay 2DG module BUS-2, in surface mount housing, including 2 DG inputs	CL C	Gr. 3
044500	SOUNDER/FLASHER WITH 2 INPUTS BUS-2	In surface mount housing, including 2 DG inputs	CL C	Gr. 3
062090	SMOKE DETECTOR BASE BUS-2/BUS-1	For IQ8 detectors	CL C	Gr. 2
MB-DGB2MFPX	MB DOORGUARD BUS-2 MIFARE+PROX	Incl Sounder+flasher, mifare+prox + 4 DG inputs, for monitoring emergency exit doors	CL C	Gr. 3
MB-KSB2MFPX	MB KEYSWITCH BUS-2 MIFARE+PROX	Control unit for amok alarm, without sounder/flasher	CL C	Gr. 3
AP-0120	APERIO HUB RS-485 FOR MB-SECURE	Aperio RS-485 HUB for up to 8 Aperio wireless cylinders/fittings, without VdS	-	-
027910	LUMINAXS PROX READER RS 485 WITHOUT KEYP	With light ring, buzzer and tamper contact, without VdS	-	-
027911	LUMINAXS PROX READER RS 485 WITH16 KEYS	With light ring, buzzer and tamper contact, without VdS	-	-
027912	LUMINAXS PROX READER RS 485 WITH 2 KEYS	With light ring, buzzer and tamper contact, without VdS	-	-
027913.10	LUMINAXS MIFARE READER RS485/C-D/W WO KB	With light ring, buzzer, tamper contact, for VdS-compliant arm/disarm	CL C	Gr. 3
027914.10	LUMINAXS MIFARE READER RS485/CD/W16KEY	With light ring, buzzer, tamper contact, for VdS-compliant arm/disarm	CL C	Gr. 3
027915.10	LUMINAXS MIFARE READER RS485/CD/W2KEY	With light ring, buzzer, tamper contact, for VdS-compliant arm/disarm	CL C	Gr. 3
026350	MB-SECURE MIFARE DESFIRE EV2 KEYFOB	Key fob, pre-formatted for MB-Secure/PRO, for VdS-compliant arm/disarm	Accessory	Accessory
026351	MB-SECURE MIFARE DESFIRE EV2/EM4200 FOB	Combination key fob, proX+mifare DESFire, preformed, for VdS-compliant arm/disarm	Accessory	Accessory
026355	MB-SECURE MIFARE DESFIRE EV2 CARD	Blank card, pre-formatted for MB-Secure/PRO, for VdS-compliant arm/disarm	Accessory	Accessory
026356	MB-SECURE MIFARE DESFIRE EV2/EM4200 CARD	Card combination proX+mifare DESFire, preformatted, for VdS-compliant arm/disarm	Accessory	Accessory

TECHNICAL DATA

Part No	Name	Technical data
MB-PRO4000BASE	MB-Secure PRO base board	W 158mm x L 226mm; Current consumption: 200 mA + 30mA (Ethernet) + 30 mA (relay)
MB-PN00x	MB Secure PRO 2000-6000	W 158mm x L 226mm; Current consumption: 200 mA + 30mA (Ethernet) + 30 mA (relay)
MB PROCLTEE	MB-PRO INT LTE module EMEA	W 108mm x L 97mm; Current consumption 55 mA, 270 mA when transmitting
013730.10	ZG20 housing for MB-Secure/PRO	W 460 mm x H 382 mm x D 85 mm / RAL 9016 / 5 kg
013750.10	ZG3.1 housing for MB-Secure/PRO	W 500 mm x H 300 mm x D 210 mm / RAL 9016 / 9 kg
013760.10	ZG4 housing for MB-Secure/PRO	W 580 mm x H 640 mm x D 300 mm / RAL 9016 / 20 kg

BUS	Specification	Recommended cable, wiring scheme
BUS-2	BUS-2, proprietary	Shielded twisted pair copper wire, max. 1000m, free star/spur topology, no EOL resistor
IB-2	IB2, proprietary	Shielded twisted pair copper wire, max. 2000m, point-to-point (multidropped), EOL resistors 120R
Modulbus/RS-485	EIA-485	Shielded twisted pair copper wire, max. 1200m, point-to-point (multidropped), EOL resistors 120R
AADP/RS-485	EIA-485	Shielded twisted pair copper wire, max. 1200m, point-to-point (multidropped), EOL resistors 120R

Additional Informationen

Tel. +49 7431/801-0
www.security.honeywell.de
info.security.de@honeywell.com

Honeywell Commercial Security

Novar GmbH
Forumstraße 30
41469 Neuss
Deutschland
www.honeywell.com

Subject to changes and errors.

HBT-DS-MBSECUREPRO-EN-11nov2023
© 2023 Honeywell International Inc.

THE
FUTURE
IS
WHAT
WE
MAKE IT

Honeywell