

MB-SECURE PRO

CONNECTION OPTIONS

MB-SECURE PRO	16	48	128	256	512	1024	2048
MAXIMUM PARTICIPANTS	16	48	128	256	512	1024	2048
MAXIMUM DATA POINTS	16	48	128	256	512	1024	2048
MAXIMUM I/O MODULES	16	48	128	256	512	1024	2048
MAXIMUM DOORS	16	48	128	256	512	1024	2048

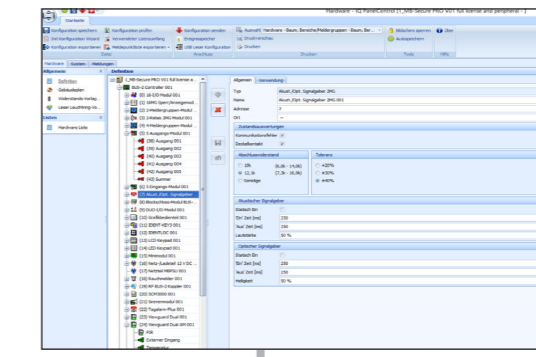
One Controller - four bus systems

Thanks to the 4 multifunctional BUS connections, the MB-Secure adapts perfectly to all installation environments. Each connection can be configured separately to one of the four possible operating modes:

- **BUS-2** for up to 64 BUS-2 participants
- **IB2** for up to 10 IB2 BUS extensions with 4 additional BUS-2 lines each
- **Modulbus/RS-485** For connecting readers and I/O modules
- **AADP/RS-485** for connecting to Aperio RS-485 HUB

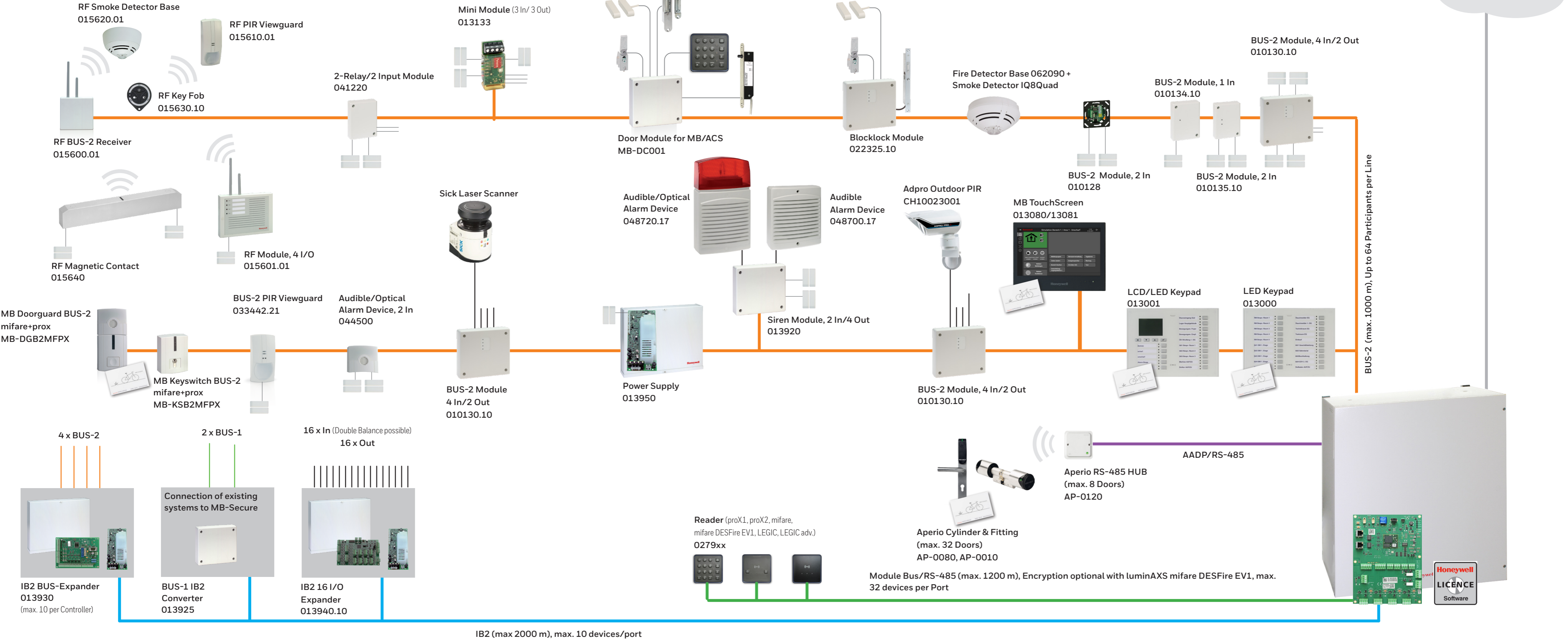


WINMAG plus Management System
WM2010 Basic License 500 Data Points
WM3010 Option MB Devices

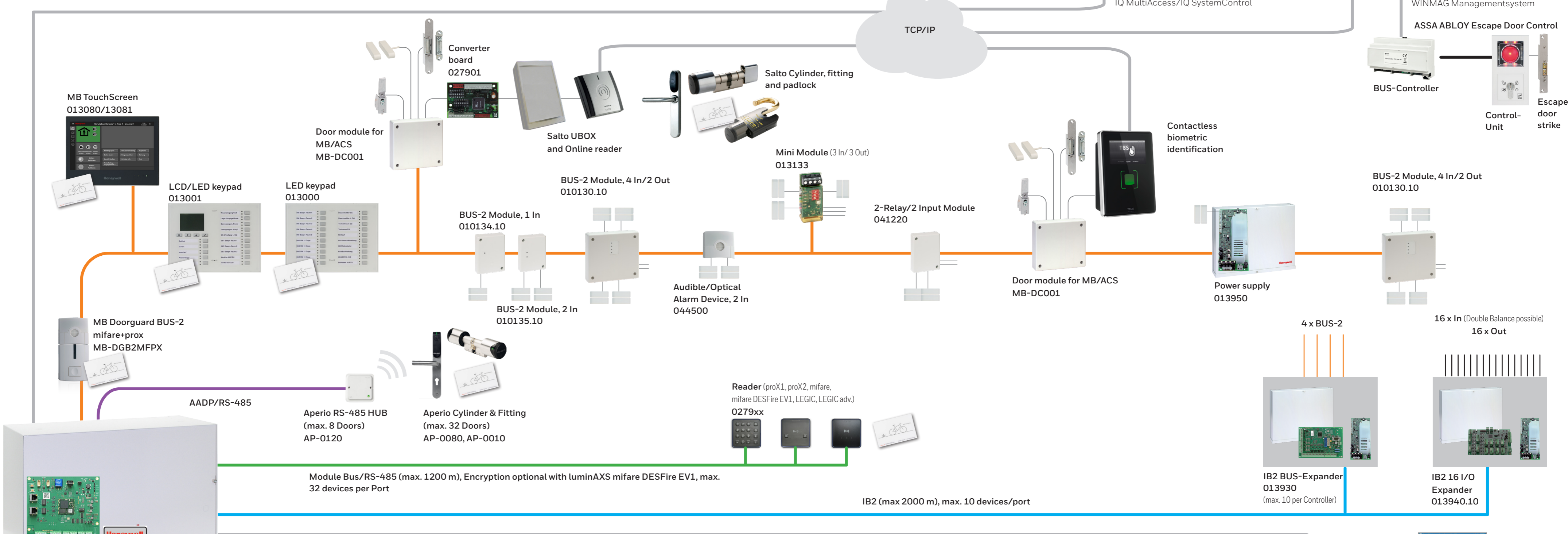


IQ PanelControl

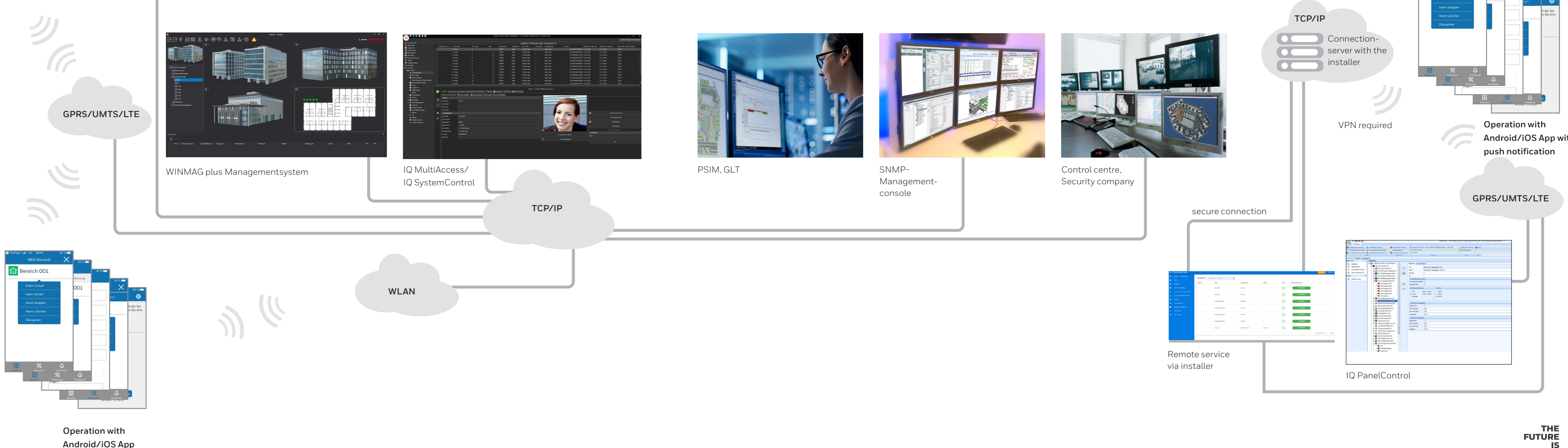
MB-Secure PRO - Connection Option Intruder



MB-Secure PRO - Connection Options Access



MB-Secure PRO - Connection Options IP



For additional information
www.security.honeywell.de

Changes and errors excepted.
HBT-Poster-MB-SECURE-PLUS_DE0224
© 2024 Honeywell International Inc.

Honeywell

THE FUTURE IS WHAT WE MAKE IT