

# EVERYTHING AT A GLANCE

WINMAG plus Alarm Management System

---

For Users

---



**Honeywell**



# ALARM MANAGEMENT SYSTEMS WITH A NEW PERSPECTIVE 360°

## DETECTING ALARMS AND DEALING WITH THEM EFFICIENTLY

Building security requirements are becoming increasingly more complex. As a result, the need for more complex automated processes in the event of an alarm combined with surveillance transparency is growing. WINMAG plus helps you stay in control.

This is because the innovative alarm management system enables high levels of integration of existing systems with excellent operability, intuitive control and sequence automation. Innovative properties such as the 3D view provide the perfect overview of events and assist your team in taking the right decisions in alarm situations and in initiating predefined sequences.

## STAY FULLY INFORMED WITH WINMAG PLUS

The WINMAG plus alarm management system, lets you create a scalable software solution with superb levels of integration with different sub-systems.

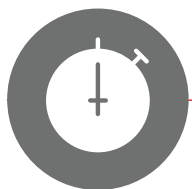


## ADVANTAGES AT A GLANCE

Comprehensive building security through the integration of various sub-systems. The merging of all security sub-systems permits the immediate evaluation of an alarm situation, and predefined interaction between all the necessary measures. The unique performance features of WINMAG plus mean that you are in control. Combining intuitive system operation with advanced visualisation of emergency situations, WINMAG plus delivers a management system in which all workflows interact seamlessly via all sub-systems.

- Visualisation and active control of alarm components in intrusion and fire detection technology, access control and video technology, as well as control systems for escape route systems and emergency exits via a standard user interface
- Integration of voice alarm activation
- Building visualisation in 3D with the support of camera tracking through the building
- Import of AutoCAD graphics and 3D models
- Detector points are integrated in the 3D view
- Control of the camera angle permits a realistic assessment of the situation
- Multi-monitor operation
- Integrated via 150 interfaces
- Integration of Honeywell video and fire detection systems
- Simplified preparation of action sequences via the script language SIAS
- Use of external tools, for instance Word, via user-configurable names and icons
- Hybrid operation permits independent control of individual locations
- Integration with visitor administration, video analysis, perimeter and guard control systems
- Configurable logging for optimum evaluation of all events via a web browser
- OPC add-ons
- New module for notification with delivery via e-mail, SMS and voice messages
- New pay-as-you-go licensing offers bespoke licensing of the scope of performance actually used, as well as ease of upgrading and conversion

## UNEXPECTED INCIDENTS GO COMPLETELY TO PLAN



WINMAG plus signals an alarm. Optional forwarding to mobile phones, pagers or DECT-enabled devices and where necessary, transmission of the route map to emergency service personnel.



Alarm activation takes place via the integrated voice alarm activation system, while WINMAG plus controls the escape routes and monitors the situation.



WINMAG plus signals the position and operational status of all the elevators and visualises where there are still people located.



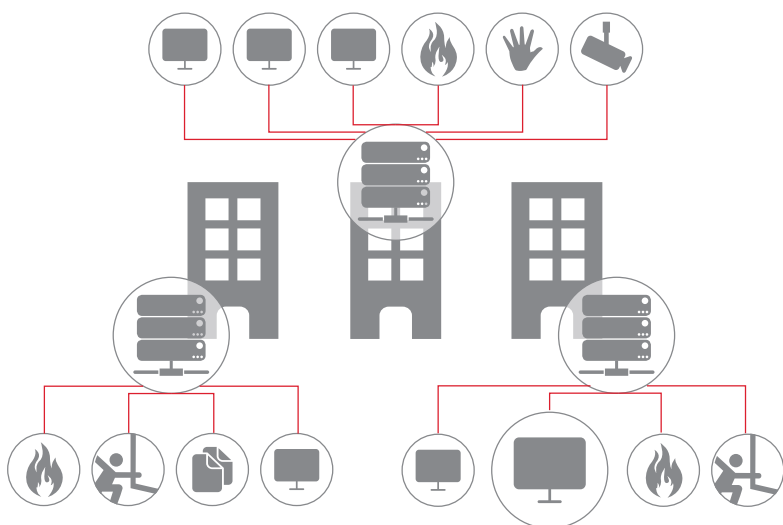
The integrated intrusion detection system provides information about the status of windows and doors whereas WINMAG plus controls access points accordingly. The building control systems determine the status data, and WINMAG plus visualises it in 3D.



# WINMAG PLUS

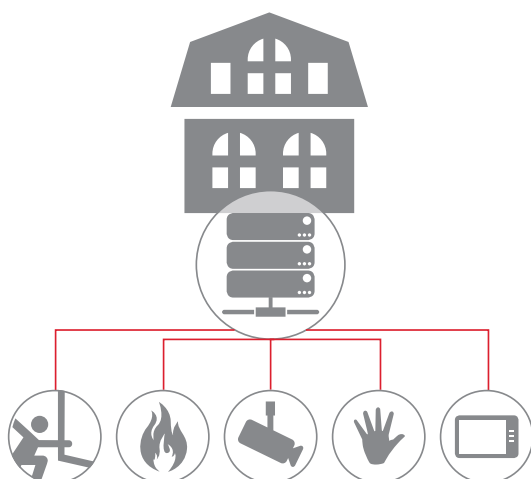
## A SYSTEM FOR ALL EVENTUALITIES

WINMAG plus adapts to the circumstances of the building, the requirements of the property as well as the respective security requirements. In high-value private residences as well as in company-wide buildings, even if multiple sites are to be centrally monitored.



### EVERYTHING UNDER CONTROL ACROSS THE COMPANY

- Integration of site-specific sub-systems
- Site-specific action plan
- Regional and cross-regional surveillance control centres
- Planning and investment security
- Integration of third-party systems
- Gateway to building automation systems



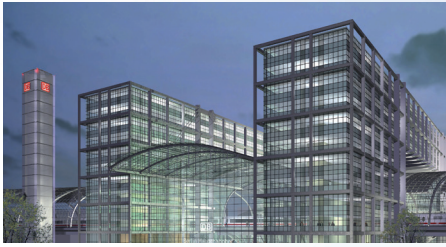
### SECURITY TO REFLECT THE NATURE OF THE BUILDING

- Touch panel control
- Property-specific action plan
- Adaptable user interface
- Integration of third-party systems
- Alarm activation to emergency monitoring centres



# SAMPLE SOLUTIONS

Integrated security solutions are common practice with us. This explains why many well-known companies use the WINMAG plus alarm management system. The right solution for your site.



**DEUTSCHE BAHN AG**



**GERMANY | BERLIN**



**WINMAG PLUS**

- Central fire alarm system
- IQ MultiAccess
- Access control



**OHROPAX**



**GERMANY | WEHRHEIM**



**WINMAG PLUS**

- Intrusion detection system
- Access control
- Video technology
- 40" display



**HYPO TIROL BANK**



**AUSTRIA | INNSBRUCK**



**WINMAG PLUS**

- Intrusion detection system
- Access control
- IQ SystemControl software



**AMSTELLAND HOSPITAL**



**NETHERLANDS | AMSTELVEEN**



**WINMAG PLUS**

- Video
- HFVMS Fusion video management software

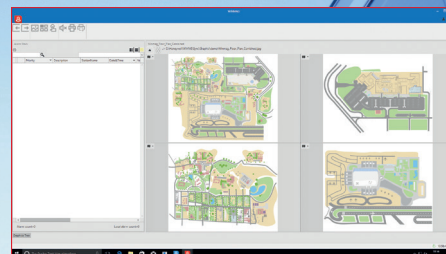


## A SYSTEM WITH ALL THE OPTIONS IN ONE PLACE

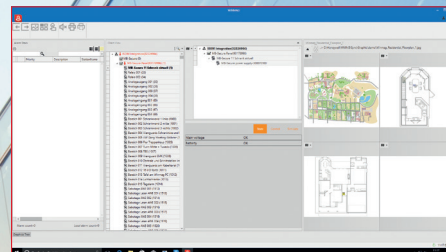
Enabling you to see a clear and comprehensive view of your security status.

All the detector points can be displayed quickly and conveniently on the screen in 3D through a simple user interface.

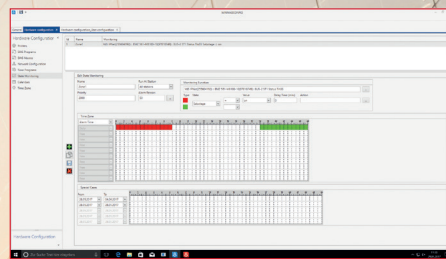
Events are logged via a web-based reporting tool.



*Clear and comprehensive: the new user interface*



*Clear in detail: Image tree with a favorite view*



*Information about the status of the hardware configuration*

## INTEGRATION: THE SECRET TO FUTURE SAFETY

WINMAG plus is perfectly suited to your building. Through its comprehensive support for interfaces with existing or planned sub-systems and their high integrability, your existing and future technology can be integrated perfectly. You make savings on two fronts: no high costs for the procurement of new technology

and no exorbitant installation costs. And your installation is future-safe.

- The new enterprise software architect consists of a controlling station model, a configuration model and a communication model for optimised flexibility in configuration
- The support of the new OPC UA protocol enables scalable driver implementation for the integration of the different sub-systems

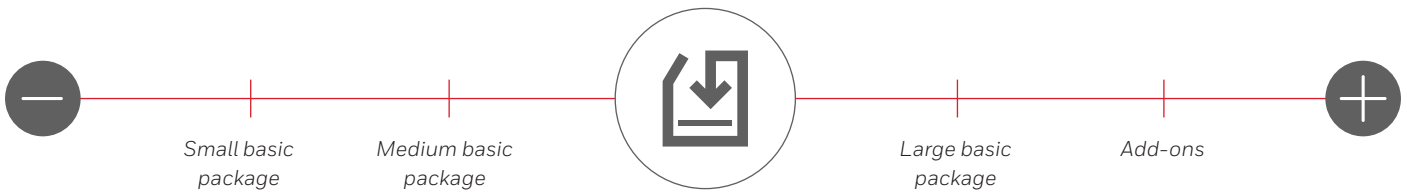
- Standard support for different Honeywell systems for fire and intrusion detection technology, access control and video technology, as well as control for escape route technology and emergency exits
- Integration of systems from various third-party manufacturers

Company-specific customisation of the user interface



## IT IS NOT THE QUANTITY, BUT THE QUALITY OF YOUR SECURITY:

WINMAG plus performs the alarm management from high-end residences to complex industrial facilities. The scalability of the system facilitates precise adaptation to reflect the scale of the task.



## THE SYSTEM THAT GROWS IN LINE WITH REQUIREMENTS

WINMAG plus is not a rigid system; it is a flexible solution which adapts to the varying sizes and duties involved in alarm management. Whether securing high-value private residences or monitoring complex industrial facilities – thanks to the modular approach, system performance always

corresponds precisely to the actual requirement. If it increases, WINMAG plus simply grows with it. Thanks to the unique licensing model, you only ever have to pay for the individual installation that you actually use. WINMAG plus, the right decision now and for the future. Together with the high integrability of your existing or future hardware, you will be closing all security gaps and keeping all options open for your alarm management.



# WINMAG PLUS ORDERING INFORMATION

## WINMAG PLUS

WM1001 WINMAG plus installation medium

## BASE LICENSES WINMAG PLUS

WM2010 Base package with 500 data points  
WM2020 Base package with 1.500 data points  
WM2030 Base package with 2.500 data points  
WM2040 Base package with 10.000 data points  
WM2050 Base package with 20.000 data points  
WM2060 Base package with 50.000 data points

## UPGRADE PACKAGE WINMAG PLUS TO NEWEST VERSION

WM2310 Upgrade including 2.500 data points  
WM2320 Upgrade including 10.000 data points  
WM2330 Upgrade including 20.000 data points  
WM2340 Upgrade including 50.000 data points

## DATA POINT EXTENTIONS FOR BASE PACKAGE

WM2110 Additional 500 data points  
WM2120 Additional 2.500 data points  
WM2130 Additional 5.000 data points  
WM2140 Additional 10.000 data points

## CLIENT LICENSES

WM2200 WINMAG plus client  
- single license  
WM2210 WINMAG plus client  
- license package, 5 pcs.  
WM2220 WINMAG plus client  
- license package, 10 pcs.  
WM2230 WINMAG plus client  
- license package, 25 pcs.

## OPTIONS

### EXPANSION LICENSES

WM3132 Fire panels SCAME HS-81 Series  
WM3210 Honeywell Video  
WM4010 Redundancy  
WM4030 Multi Monitor  
WM4040 Auto-CAD®

### OPC AND BACNET

WM5100 OPC Server  
WM5200 WINMAG plus OPC Client  
WM5300 OPC/BACnet 500 Tags

## Honeywell Industrial Fire

Via Lombardia 5  
20004 Arluno (Milan) Italy  
Tel: +39 02 36017829  
E-mail: [industrialfire@honeywell.com](mailto:industrialfire@honeywell.com)  
[industrialfire.honeywell.com](http://industrialfire.honeywell.com)

Subject to change without notice.

HIS-WINMAG\_plus\_62-01-ME(0420)DS-ZB  
© 2020 Honeywell International Inc.

THE  
FUTURE  
IS  
WHAT  
WE  
MAKE IT

**Honeywell**