

by Honeywell



HEALTHCARE SECTOR SOLUTIONS

MK Electric is the UK's leading wiring devices manufacturer and for over 100 years we've been offering a comprehensive range of products with unrivalled levels of quality, reliability and safety. Across the board, from product innovation through to sales support and delivery, the combination of MK's products and services provides an extremely effective offering to those involved with the specification, installation or maintenance of electrical accessories in the Healthcare Sector.

For over 100 years, MK Electric have been setting the standards, with our first ever product, the game-changing Multy Kontakt Socket, the first modern light switch and the first 3-pin child resistant shutter system, as well as winning awards for wireless and batteryless switches and optimum and efficient USB charging solutions.

MK also manufacture a host of other products, including overhead and underfloor power and data distribution systems and PVCu cable management systems. We're incredibly proud of our British manufacturing heritage, over 80% of MK Electric products sold in the UK and Republic of Ireland are made in the UK.

Today, MK is part of Honeywell, a \$40.5bn, Fortune 100 company, providing access to vast technologies and global supply chain power - meaning our customers reap the benefits of our status as a local, but global, business.

We're engineers, inventors, pioneers and perfecters. That's why, whatever your needs, you can specify, install and use MK products with confidence.



MK SOCKETS - SAFETY

MK's 13A sockets* have a "child resistant shutter system", which is designed to inhibit access to the electricity supply, unless all three pins of a British Standard plug are in position.

By choosing our sockets, you can be sure that you are giving your building the ultimate in electrical protection.

All electrical sockets manufactured to the British Standard must incorporate a shutter mechanism. British standards ensure a minimum safety level is achieved in the design and manufacture of electrical accessories. MK's socket design offers the maximum safety benefit and is the most difficult shutter mechanism to defeat unless correctly being used with a British plug.



Masterseal Plus™ Logic Plus Albany Plus Metalclad Plus™

*Excludes MK Essentials

3-pin "child resistant shutter system"

MK safety shutter only opens when pressure is applied simultaneously through the three pins, considerably reducing misuse



Double Pole Switching

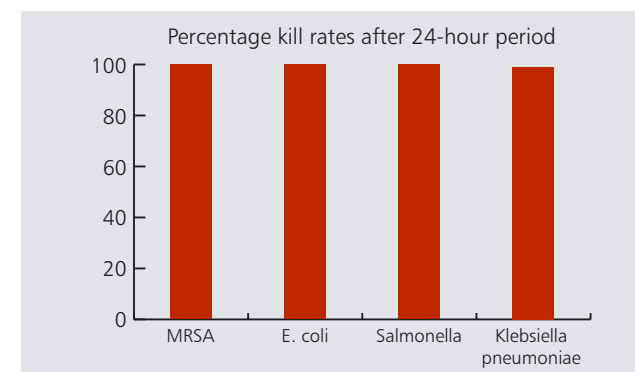
Switches both live and neutral contacts (neutral makes first, breaks last) for added end user safety

ANTI-BACTERIAL PRODUCTS

Hospitals and healthcare establishments go to great lengths to prevent patients acquiring infections whilst under their care to protect patient health and prevent extended hospital stays and additional costs that put pressure on resources.

According to research published in the British Medical Journal, every adult patient who contracts a Healthcare Acquired Infection (HCAI) will have an increased length of stay in hospital, at cost of more than £586 per day*. At a time when health services are under considerable pressure to free up resources, preventing HCAIs has never been so critical.

MK Electric commissioned independent testing on the Logic Plus range by a reputable independent UKAS accredited laboratory. The laboratory tested the products, after cleaning with disinfectant (the Government's 'Deep Clean' policy targeted all hospitals to undergo a deep clean by March 2008, which included cleaning all fixtures and fittings).



Source: MK commissioned report, 2008

*<https://bmjopen.bmj.com/content/9/10/e029971#T2>

THE METHOD

The organisms MRSA, E. coli, Salmonella and Klebsiella pneumoniae were applied to the products. Results were collected at 0 minutes, 4 hour, 8 hour and 24 hour intervals.

SUMMARY

MRSA Logic Plus has a kill rate of over 99.9%.

99.9% kill rate for E. coli and Salmonella.

Klebsiella Pneumoniae Logic Plus has a kill rate of 98.9%.

The Logic Plus range is produced using Urea Formaldehyde, a high grade thermoset material, which has similar inherent properties to antimicrobial additives, which inhibit the growth of infectious diseases such as MRSA, E. coli, Salmonella and Klebsiella Pneumoniae. In addition, Logic Plus products are scratch-free thanks to high quality mould tools, which means there are no dirt traps for bacteria to breed.

Whilst cleanliness is key to fighting these infections, and not replaced by the use of MK's Logic Plus products, the independent results show that the range is effective at killing MRSA organisms and contributes beneficially to any hygiene regime.

PRESTIGE 3D ANTIBAC BLUE



PRESTIGE 3D ANTIBAC BLUE INSTALLED WITH LOGIC PLUS SOCKETS FOR A COMPLETE ANTIBACTERIAL SOLUTION



Prestige 3D Antibac Blue offers an antibacterial cable management solution for power and data distribution in environments where hygiene is a priority. With ongoing concern over hospital acquired infections such as MRSA, the demand for antibacterial products continues to rise. Prestige 3D Antibac Blue is designed to kill bacteria which can grow on surfaces such as trunking systems.

MK offer a complete antibacterial solution, by complementing Prestige 3D Antibac Blue with Logic Plus wiring devices, the entire installation will meet the requirements of an antibacterial specification. The trunking and wiring devices are both open to contact, therefore the control of the spread of bacteria and infections can only be effective with a complete solution. MK's Prestige 3D Antibac Blue range will meet the demands of the Healthcare Trusts, Infection Control Departments or Facilities Managers specifying antibacterial products.

HOW DOES PRESTIGE 3D ANTIBAC BLUE WORK?

It uses an additive inherent within the PVCu which acts as an effective weapon in fighting bacteria such as MRSA and other harmful bacteria. The additive is a bactericide and will therefore kill bacteria instead of just restricting their growth.

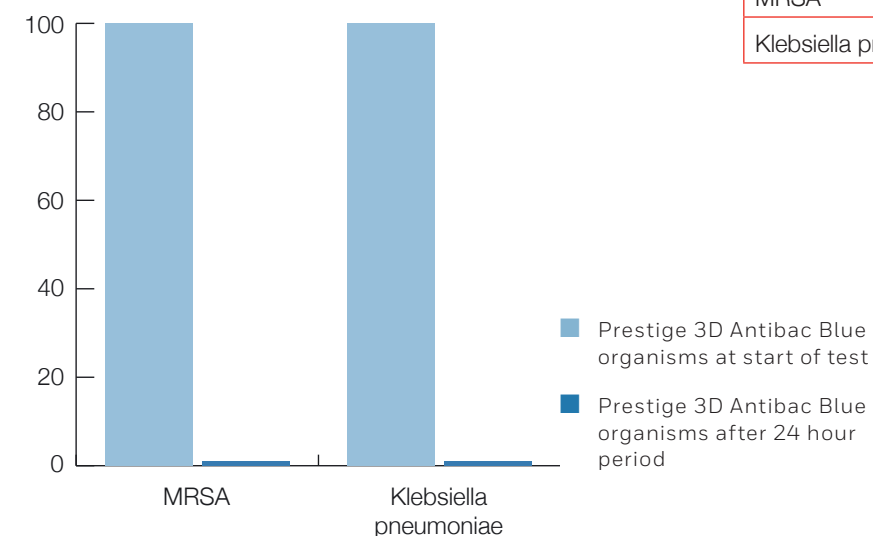
As the additive is inherent within the PVCu compound the antibacterial protection runs throughout the products themselves. There is no loss of protection where the trunking lengths are cut on-site or if the trunking surface becomes scuffed or scratched.

Prestige 3D Antibac Blue is not intended to replace standard cleaning regimes. It is an additional protection which can only operate efficiently if the surfaces are kept free of dirt and grime.

The antibacterial additive used in Prestige 3D Antibac Blue is registered with the Environmental Protection Agency (EPA) and compliant with the European Biocidal Products Directive (BPD).

MK Electric have commissioned independent tests to verify the antibacterial properties of Prestige 3D Antibac Blue. The results, collected over a 24 hour period shows results of >99.9% kill rates on the organisms MRSA, and Klebsiella pneumoniae.

PRESTIGE 3D ANTIBAC BLUE		
	% Organisms at start of test	% Organisms after 24 hour period
MRSA	100	<0.1
Klebsiella pneumoniae	100	<0.1



PRESTIGE 3D ANTIBAC BLUE: FEATURES AND BENEFITS

END CAPS

Neatly finishes runs of trunking. (Moulding provides internal location for extra security from optional screw fixing).

DIVIDER KNOCKOUTS

Wiring is also made easy with 50 x 21mm knockouts at 100mm intervals along compartment dividers, providing instant access to mounting boxes, with no drilling or cutting.

BACK BOXES

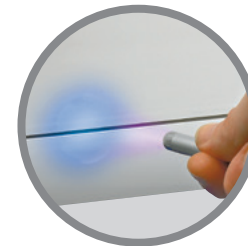
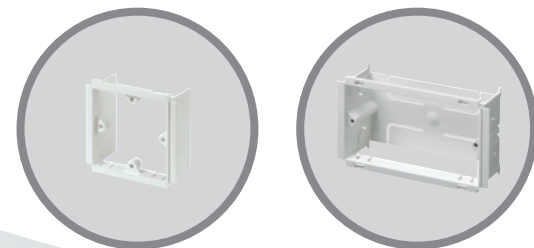
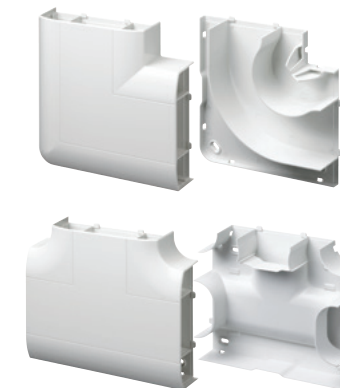
The 1, 2 and 3 gang 45mm deep back boxes and 1 and 2 gang 40mm frames ensure Cat 6 compliance and ease of connection to power and data devices. The open top/bottom allows unhindered tool free cable entry, through the trunking compartment divider knockout. The back box can slide to align with appropriate knockout (see technical pages for restrictions on use).

UNIQUE FLUORESCENCE

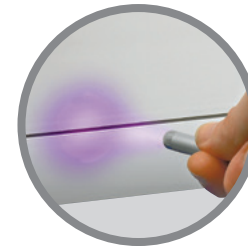
For complete customer confidence, Prestige 3D Antibac Blue features a patent pending fluorescent additive which glows bright blue under a UV light, unlike standard PVCu which glows dull purple.

FLAT TEES AND ANGLES

The ingenuity of the patented tee design allows a variety of cable drop permutations. The tee's bridge can be fitted in two positions increasing the versatility of cable runs whilst maintaining the correct segregation and Cat 6 compliance. Screw fixing hole locations have a protective shroud to prevent the chafing of cables. Both the Flat Angle and Tee compartment divider walls are curved (Cat 6 compliant) to allow data cables to lay in with no loss of capacity. The covers are one piece and clip securely into place, and the base is also a single moulded item, giving more strength than fabrication. Joint covers are not required where the tee/angle meets the trunking as the moulded covers now overlap the junction.



Prestige 3D Antibac Blue



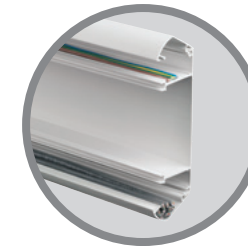
Prestige 3D

STYLING LINES

All fittings are moulded with styling lines for aesthetic continuity.

TRUNKING HINGE LIDS

A two stage location gives a hinge effect, enabling cables to be supported by the trunking cover during the installation. Cover design avoids dust traps and makes cleaning easier, and continues the aesthetics of the trunking.



PRE-PUNCHED BASES

Wall fixing is simplified by the inclusion of pre-punched oval holes at 100mm intervals, ensures no drilling is required.



INTERNAL CORNER

Designed to accommodate irregularities in the squareness of the corner with a +/- 5 degrees flexibility range. The centre split gives maximum adjustment. Covers are radiused and compatible with Cat 6 data cabling requirements.



EXTERNAL CORNER

External Corners accommodate +/- 5 degree irregularities in the squareness of a corner. Corners come ready assembled to click into place, and offset side splits hide the effect of the split line for aesthetics.

DATA SWEEP

The unique patented Data Sweep provides Cat 6 data cabling compliance, with no loss of capacity and without the need for bulky, protruding corner covers.

ELECTROMAGNETIC INTERFERENCE

Additional data cable/signal protection is provided by fitting screening divider VP30.

CHOICE OF TWO PROFILES

Available in Dado and Skirting profiles to suit most installations.

PART M

Compliance to Part M building regulations can be achieved using Part M flange or devices.



SCREW FIXING KIT

Where higher security is required, e.g. schools, all fitting covers can be secured using the Screw Fixing Kit. The Screw Fixing Kit is self-locating on the styling line of the system and has a cover to hide the screw head.



MK OFFERS A COMPLETE ANTIBACTERIAL SOLUTION

Prestige 3D Antibac Blue offers an antibacterial cable management solution with a fluorescence under UV light. Install with Logic Plus wiring devices, with its inherent antimicrobial properties, for a complete antibacterial solution.

- Prestige Antibac Blue - Independently verified kill rate of >99.9% on the organisms MRSA and Klebsiella Pneumoniae.
- Logic Plus - Independently verified kill rate of >99.9% on the organism MRSA, E.Coli and Salmonella. 98.9% on Klebsiella pneumoniae. Both White and Graphite finishes.
- **Made GREAT. In Britain.** Cable management and wiring devices manufactured in the UK.



Prestige 3D Antibac Blue



Prestige 3D

GO FOR THE BLUE GLOW

**BACTERIA
• FREE ZONE •**

PRESTIGE 3D ANTIBAC BLUE
CABLE MANAGEMENT THAT DOESN'T GROW ON YOU

HEALTH TECHNICAL MEMORANDUM 06-01

The Health Technical Memorandum 06-01 document published in 2017 has given healthcare organisations clear and strict guidance regarding the electrical wiring and installation within new, refurbished or upgraded healthcare establishments. This has replaced the MEIGaN regulations.



THE KEY STIPULATIONS OUTLINED ARE:

15.27 States that Socket-outlets in Medical Location of Group 2 that are connected to the Medical IT system should be unswitched, coloured blue and permanently identified as “Medical Equipment Only”.

As well as the Health Technical Memorandum (HTM) also see BS7671:2018 (18th Edition of the IET Wiring Regulations) - Section 710, 710.553.1 which relates to this subject.

In order to meet these requirements MK have produced unswitched socket outlets:

K733CE BLU 2G 13A Clean Earth Unswitched Socket

K732BLU 1G 13A unswitched socket outlet

15.21 States that in specific Medical Locations (‘of Group 1 or Group 2,’) trailing multi-outlet extension leads should not be allowed. That the use of extension leads could compromise the safety value of the circuits to which they are connected and affect patient safety.

Due to the ever increasing demand for power (and data) in healthcare establishments MK offers product solutions – for both new build and retrofit applications, with the additional benefit of easily ‘adding on’ as needs evolve.

Prestige 3D Three compartment trunking, available in dado, skirting, Antibac Blue and compact versions

Cablelink Plus Floor Distribution Systems for Raised Floor and Screed Floor



BUILDING REGULATIONS: APPROVED DOCUMENT M

Approved Document M provides guidance on how buildings should be designed so that they are accessible by all people to meet the requirements of Part M of the Building Regulations 2010, with particular consideration given to those with disabilities.

There are almost 14 million disabled people in the UK and in 2004, to help make facilities within a building accessible to all, the government issued Part M of the Building Regulations.

Firstly, appropriate selection of products considered to meet the regulations must be made, secondly they must be installed and positioned to meet the regulations.

However, when it comes to specifying electrical accessories, the onus for following the regulations is on the specifier or installer.

In total, 13 provisions are included within Approved Document M and MK offers a range of solutions to support compliance, including;

CONTRAST BETWEEN FRONTPLATE AND WALL

- 30 points Light Reflectance Value (LRV) recommended
- MK offers switches and sockets with graphite frontplates that contrast with walls with a LRV of 40 or more.
- Contrasting charcoal flange and socket spacers are also available to provide colour contrast within MK’s Prestige 3D trunking systems.

SWITCHES USED BY THE GENERAL PUBLIC

- Part M encourages these switches to have large push pads and be mounted at a height corresponding to the door handle, within the range 900-1100mm from the floor level.
- Switches with wide rockers are available across MK’s wiring device ranges.

SWITCHES TO BE WELL SEPARATED

- The provisions do require individual switches on multiple sockets to be well separated, or operated by a push pad to prevent them from being activated inadvertently.
- MK socket outlets with outboard rockers are available and provide ease of use for those with visual impairment or limited dexterity.
- Additionally, the MK Grid Plus range provides a varying degree of separation of switches.
- Where wall mounted light switches cannot be provided, such as in bathrooms or toilets, pull cords fitted with 50mm bangles to aid grip are recommended.
- The bangles should be visually contrasting with their background



MK ELECTRIC PRODUCTS: EXAMPLE SPECIFICATION FOR A HEALTHCARE ESTABLISHMENT



Sockets for medical
IT systems



Logic
Plus



Part M
Wiring Devices



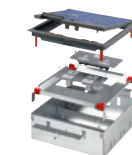
USB
Charging



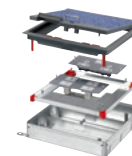
Grid
Plus



Prestige 3D
Antibac Blue



Cablelink Plus
Single Pan Box



Cablelink Plus
Scred System



On-Desk
Modules



Masterseal
Plus



Metalclad
Plus



RCD
Socket



MK
Sensors



WIRING DEVICES



LOGIC PLUS

Unrivalled breadth of range

- Extensive range for a total wiring device solution
- UK manufactured from high quality materials
 - Inherent antimicrobial properties
 - UV stable
- Total safety: 3-pin operated 'child resistant shutter system'
- Quick and easy to install
 - Upward facing, in line terminals
 - Backed out captive screws



GRID PLUS

Comprehensive modular switching and monitoring system

- Extensive modular range of frontplates, switches, indicators, key switches, printed switches and buzzer units for flexibility
- UK manufactured from high quality materials
 - Logic Plus frontplates and Grid Plus switches have inherent antibacterial properties
 - Grid frames provide extra high corrosion resistance
- Quick and easy to install
 - Modules 'clip-fit' to the grid frame without the need of tools
 - Modules can be moved/removed whilst the frame is fitted to the back box



METALCLAD PLUS™

Durable and impact resistant

- Extensive range of tough and impact resistant wiring devices, available in two finishes
- UK manufactured from high quality materials
 - Scratch and corrosion resistant
- Total safety: 3-pin operated 'child resistant shutter system'
- Quick and easy to install
 - Upward facing, in line terminals
 - Backed out captive screws

MASTERSEAL PLUS™

IP Rated and impact resistant

- IP66 when in use: Dust-tight and protects against high pressure water jets
- Perfectly seals the Logic Plus range in a choice of grey or white enclosures
- UK manufactured from high quality materials
 - UV stable - will not crack or discolour
 - Temperature tolerant to maintain operation in extreme climates
- Robust construction from one of the toughest thermoplastics available
- Total safety: 3-pin operated 'child resistant shutter system'
- Quick and easy to install
 - Upward facing, in line terminals
 - Backed out captive screws



SENSORS

Effective energy saving

- Helping buildings reduce their total energy consumption through reliable lighting controls
- Deploying PIR and ultrasonic sensing technology for effective presence/absence detection
- Features built in photocell, allowing natural daylight to be harnessed
- Easy to install and programme
 - Colour coded pluggable connectors
 - Spring clips for rapid fixing



RCD SOCKETS

Enhanced RF immunity against nuisance tripping

- Choice of 1gang and 2gang active and passive sockets across Logic Plus, Metalclad Plus, Albany Plus and Masterseal Plus
- Fully compliant to related standards including the latest 2016 revision (BS7288:2016)
 - Offering enhanced RF Immunity to avoid nuisance tripping when exposed to electronic devices such as mobile phones
- Trusted reliability and performance
 - Fast tripping within 40milliseconds
 - Mechanical flag system to identify a live power supply to the device (more reliable than LED)



CABLE MANAGEMENT SOLUTIONS



PRESTIGE 3D FAMILY

Dado, Skirting, Compact and Antibac Blue

- Family of three compartment trunking solutions
- Supports Cat 5e to 7 compliance
 - Patented Data Sweep for maximum cable capacity
 - Flexible internal/external corners
 - Moulded flat angles and tees
- Quick and easy to install
 - Pre-punched bases
 - Tool - free cable entry back boxes
 - Moulded flat angles and tees
- Main carrier made from 100% recycled materials
- Curved cover design compliments Logic Plus wiring devices

Prestige 3D Compact

- All the benefits of Prestige 3D but in a smaller footprint for confined spaces



PINNACLE

Solution for bench tops and undershelves

- Versatile configurations that provide bench top access to power, data and USB charging
 - Choice of single or double configurations and two profile heights
 - Can be installed horizontally (including undershelf) or vertically
 - Curved styling to perfectly compliment Logic Plus wiring devices
- Quick and easy to install
 - Clip-on covers for easy access, making future modifications simple
 - Can be easy cut on or off site



PREMIER

Integrated trunking system

- Adaptable trunking system that provides perimeter access to power, data and USB charging
 - Range of trunking sizes and accessories available
 - Cable dividers for segregation of services
- Quick and easy to install
 - Clip-fit covers and snap fit mouldings provide a modern integrated trunking
 - Can be easy cut on or off site

POWER DISTRIBUTION SYSTEMS

CABLELINK PLUS SCREED SYSTEM

Screed floors

- Provides adaptable power and data distribution highways in screed floors as low as 53mm
- High load bearing performance to 5000N
- Trusted performance and manufactured from high quality materials
 - Robust cord cap design for retention
 - Lid handle for improved accessibility
- Optional lockable lid and lid tether for added security
- Quick and east installation
 - Fast-fit ratchet self-levelling system
 - Base fixing feet
 - Flat sided base for a stronger screed solution and faster taping



CABLELINK PLUS SINGLE PAN BOX

Raised floors

- Provides an effective interface beneath the floor surfaces and the workspace environment
- High load bearing performance to 5000N
- Trusted performance and manufactured from high quality materials
 - Robust cord cap design for retention
 - Lid handle for improved accessibility
- Optional lockable lid and lid tether for added security
- Quick and east installation
 - Fast-fit ratchet self-levelling system
 - Flange fixings
 - Pre-cut side knockouts



DESKING SOLUTIONS

Powering the workstation

- Comprehensive range of pre-configured desk modules
- Solutions for both on-desk and in-desk
- Attractive ergonomic designs that provide easy access to workspace power, data and USB charging
- Made from high quality silver anodised aluminium and flame retardant mouldings
 - Scratch resistant
 - Chemical resistant
- Designed for easy and quick installation
 - On-desk modules feature an integral 'C clamp' fixing bracket



CASE STUDY: GLASGOW ROYAL INFIRMARY GETS A HEALTHY DOSE OF PRESTIGE 3D ANTIBAC BLUE

DESIGN SERVICE

The MK Design Service is perfect for when only a customised solution can meet your requirements. Our dedicated team can help – be it a particular finish, functionality or even a combination of both – from concept to completion.



Infection control is a major concern in the healthcare sector. To help reduce the risk of spreading infections, bacteria and more, Glasgow Royal Infirmary's Intensive Care Unit installed more than 55 metres of Prestige 3D Antibac Blue during a refurbishment – becoming the first hospital in the UK to improve patient and staff safety through antibacterial cabling.

BENEFITS

Complete Solution

Only MK Electric offers a complete antibacterial solution that includes both wiring devices and cable management, but the single course for every product was just one of the reasons that the Glasgow Royal Infirmary chose Prestige 3D Antibac Blue.

Beyond Healthcare

Of course, the hospital would not have chosen Prestige 3D Antibac Blue if it wasn't also an outstanding cable management solution above and beyond its health benefits. Like any healthcare facility, Glasgow Royal Infirmary's Intensive Care Unit has a large number of people moving about at any given time. The cable management provided by MK Electric not only ensures proper cabling to all equipment, but also ensures a clean, uncluttered work area for added safety.

For Glasgow Royal Infirmary's Intensive Care Unit, Prestige 3D Antibac Blue is an investment that's sure to have a healthy return.

The MK Design Service is totally focused on achieving the perfect result, utilising our technical, manufacturing and supply expertise to ensure your vision is realised.



MK Electric

The Arnold Centre, Paycocke Road,
Basildon, Essex, SS14 3EA,
United Kingdom

Customer Service Tel +44 (0) 1268 563265
Customer Service Fax +44 (0) 1268 563473
E-mail mkorderenquiries@honeywell.com

Technical

Tech Helpline Tel 01268 563720
Tech E-mail mk.technical@honeywell.com

www.mkelectric.com

UKMK465-0420-EN
© 2020 Honeywell International Inc.

