



**HONEYWELL
FORGE**

Sustainability⁺
for Buildings

EV CHARGING IS EASY WHEN YOUR BUILDING RUNS IT

Make electric vehicle charging simple to manage and cost effective for your site – with end-to-end capabilities from Honeywell Forge Sustainability+ for Buildings

Electric Vehicle Manager



Station



LOWER YOUR UPFRONT COSTS LOWER YOUR OPERATING COSTS

Do you need to control rising energy loads on your building and manage electricity costs? Are you ready to add EV charging to your site but don't know where to start?

Wherever you are in your journey, Honeywell Forge offers end-to-end options to help reduce costs and support your sustainability goals – using your own building management system and artificial intelligence to make it easier.

AN ATTRACTIVE OPPORTUNITY FOR BUILDINGS

Amidst rising energy costs and sustainability regulations, the surge in electric vehicles (EV) presents valuable opportunities:

- Attract tenants and occupants with on-site EV charging
- Support sustainability goals and commitments
- May qualify for valuable government incentives
- Can be monetized as a new source of revenue

These opportunities may also bring challenges. How should buildings:

- Manage increased loads when grid capacity is limited?
- Stabilize electrical costs and avoid hidden charges?
- Report performance for incentives, certifications and compliance?
- Manage EV charging with existing facility staff?

THE SMARTER WAY TO MANAGE EV SYSTEMS

From offices and high rises to retail centers and warehouses with electric fleets, buildings and businesses of all varieties need a straightforward way to make EV charging reliable and cost effective.

Yet, managing EV charging as a siloed system can cause issues for building owners and administrators. The increased electricity consumption affects your entire site and operating budget, so siloing it only increases the potential for high demand charges or Time-of-Use (ToU) rates, disruptive power loads, and avoidable capital expenses for on-site power sources.

EV charging needs to be managed as part of your building operations' control strategies.



THE SURGE IS HERE

Electric vehicles may reach 40–50% of U.S. car sales by 2030, according to the U.S. Bureau of Labor Statistics¹ – yet S&P Global Mobility finds that “charging infrastructure is not nearly robust enough,” needing to “grow more than eight-fold by 2030.”²

This unmet need is a valuable opportunity for buildings.

1. U.S. Bureau of Labor Statistics, [Charging into the future: the transition to electric vehicles](#), Javier Colato, Lindsey Ice, February 2023 [Accessed Nov 21, 2023]
2. S&P Global Mobility, [EV Chargers: How many do we need?](#), Stephanie Brinley, January 9, 2023 [Accessed Nov 21, 2023]

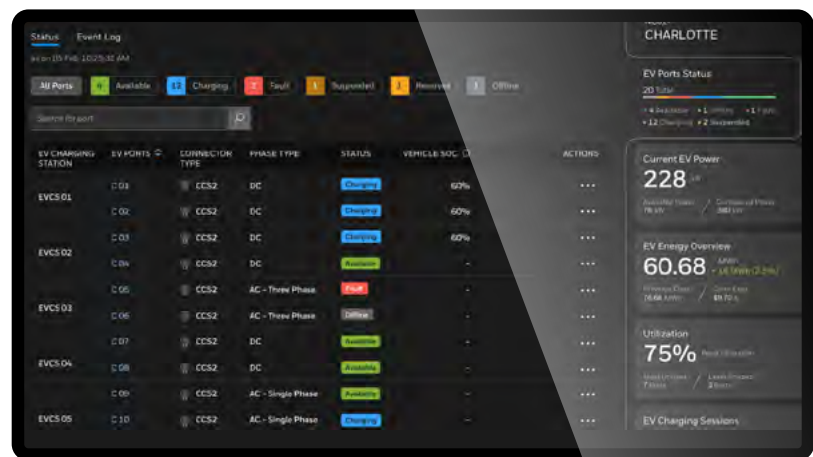
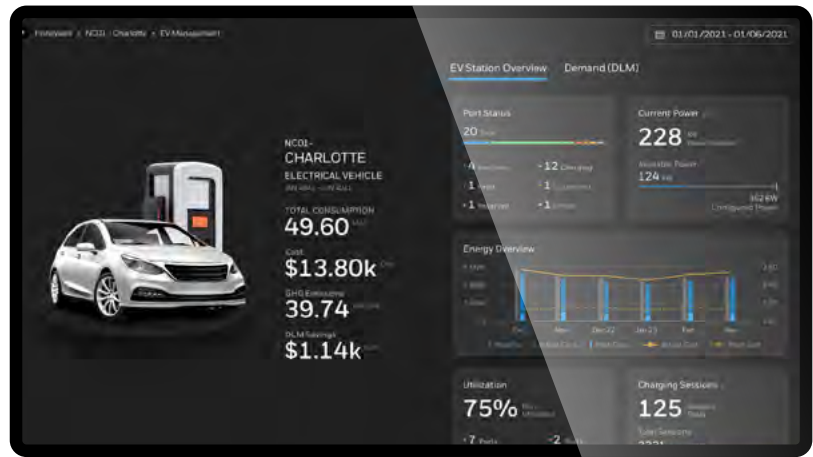
INTRODUCING ELECTRIC VEHICLE MANAGER

That's why we've developed Electric Vehicle Manager – part of the Honeywell Forge Sustainability+ for Buildings platform.

The building management system (BMS) that your facility staff already knows and uses is the sensible way to manage EV charging – giving you an efficient, unified view of EV performance alongside the rest of your building operations.

Electric Vehicle Manager is software that easily integrates with most BMS software and almost any charging infrastructure. It can also integrate any electrical power sources – your local grid, as well as distributed energy resources (DERs) such as solar panels and battery storage.

The solution's visual dashboard makes it simple to monitor and manage vehicle charging, with easier reporting for compliance needs, internal benchmarking, and earning certifications.



OPTIMIZE UTILITY COSTS AND LOADS WITH AI

Electric Vehicle Manager uses artificial intelligence (AI) and machine learning (ML) to automatically optimize electricity use across both your charging stations and other building assets – helping you to reduce or avoid demand charges and flatten the demand curve.

Electric Vehicle Manager can also help with:

- Automatically shifting electrical use to cheaper hours of the day (avoiding high TOU rates)
- Load shedding, such as dimming lighting or cycling HVAC to reduce building demand
- Forecasting demand spikes to help control use so it stays below your thresholds
- Continuous carbon footprint monitoring to proactively support carbon reduction and grid resilience



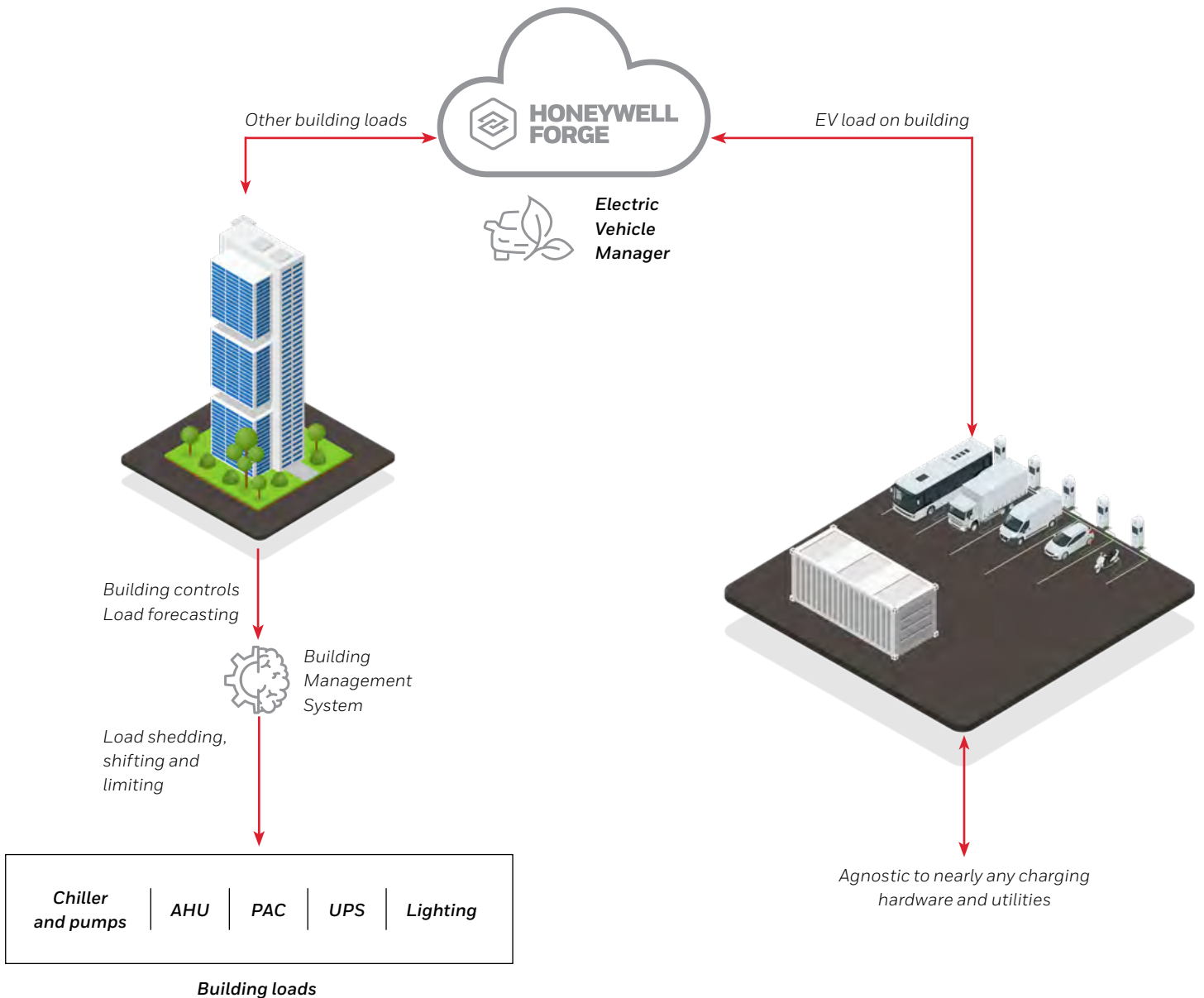
Pictures shown above are for illustration purposes only. Actual product may vary.

FULL END-TO-END CAPABILITIES AND MANAGEMENT

Electric Vehicle Manager is easy to integrate into existing EV charging systems, and we also provide end-to-end capabilities, consulting, and system management. Honeywell can help with the deployment, operations and maintenance of a complete EV charging infrastructure, including:

- Charging station hardware
- Charging management system (CMS)
- Installing and deploying of hardware and software
- Integrating into your BMS and Honeywell Forge
- Site assessment to evaluate installation requirements
- Provide an operations and maintenance (O&M) service

Even if you're not sure what to prioritize or how to get started, we'll meet with you to assess your site and help you determine which capabilities will cost effectively help you meet your economic and sustainability goals.



PUT EV CHARGING TO WORK FOR YOUR BUILDING

Electric Vehicle Manager is designed to support your sustainability goals and your bottom line by making vehicle charging straightforward and cost effective.

Optimizes electricity costs

Help reduce utility charges via load and ToU (Time-of-Use) management

Supports sustainability goals

Monitor and control the carbon and energy footprint across all assets including EV and renewable DERs

Improves uptime and performance

Manage entire EV network from a single interface and provide diagnostic tools for EV management

Reduces CAPEX and upfront risk

Reduce the need to invest in on-site power for managing EV loads with a scalable solution

Easily manage EV charging and efficiency

Manage utilization, access and time of use for EV charging stations

QUALIFY FOR INCENTIVES

From new revenue streams to government stimulus and utility rebates, electrification provides a growing number of financial opportunities.

Finding and applying for incentive programs can seem daunting at first, but we have extensive experience in helping customers navigate the options. We can help you identify opportunities in your area and then guide you through the process.



Let's turn EV charging into an opportunity for your building

hwl.co/SustainableBuildings

This document is a non-binding, confidential document that contains valuable proprietary and confidential information of Honeywell and must not be disclosed to any third party without our written agreement. It does not create any binding obligations on us to develop or sell any product, service or offering. Content provided herein cannot be altered or modified and must remain in the format as originally presented by Honeywell. Any descriptions of future product direction, intended updates, or new or improved features or functions are intended for informational purposes only and are not binding commitments on us and the sale, development, release, or timing of any such products, updates, features or functions is at our sole discretion.

Honeywell

715 Peachtree Street NE
Atlanta, Georgia 30308
www.honeywell.com

Honeywell Forge Sustainability+ for Buildings | 03.24
© 2024 Honeywell International Inc.

Honeywell