



**HONEYWELL  
FORGE**

for Buildings



**HONEYWELL  
FORGE  
CYBERSECURITY+  
FOR BUILDINGS  
| CYBER WATCH**

# HONEYWELL FORGE CYBERSECURITY+ FOR BUILDINGS | CYBER WATCH

Designed to address the multi-site capabilities and governance requirements that Chief Information Security Officers (CISOs) seek in a cybersecurity solution, Honeywell Forge Cybersecurity+ for Buildings | Cyber Watch focuses on the specific demands of CISOs overseeing multi-site operations and governance, to empower these leaders with a wealth of actionable information for OT cybersecurity.

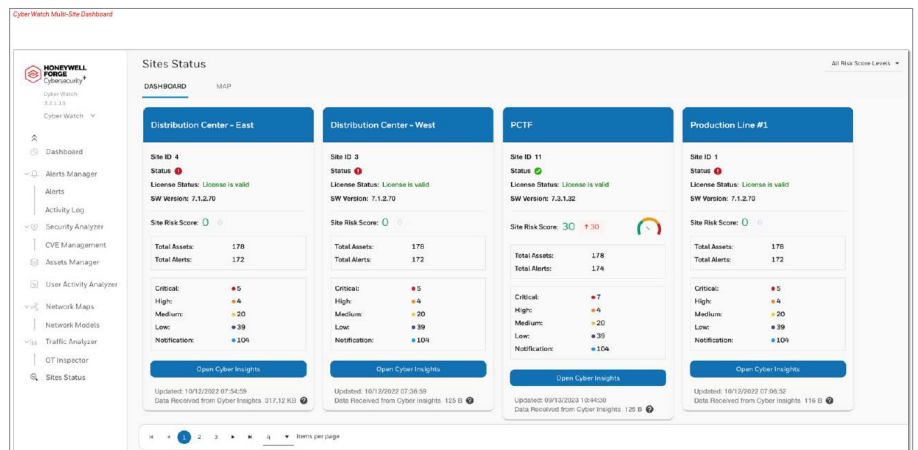
With unparalleled multi-site capabilities and governance features, this vendor-neutral solution is designed to provide access to both real-time and historical data, encompassing identified assets, threats, and vulnerabilities. It's tailored to help CISOs effectively reduce cyber risks, in order to provide seamless continuity of operations across their expansive buildings OT landscape, while keeping up with ongoing changes in cybersecurity regulations.

## KEEP WATCH OVER YOUR CYBERSECURITY STATUS ACROSS ALL SITES

Cyber Watch is a software solution designed to help you get an enterprise view of your building portfolio's OT cybersecurity posture and better manage your OT cyber risks and policy adherence across all operating sites. Cyber Watch is designed to aggregate data from each site, helping you keep watch on your cybersecurity across all sites. It's designed to provide a centralized view into OT cyber threats and to help you more quickly identify, prioritize, and respond to signs of compromise. Cyber Watch includes an optional Governance Dashboard that is capable of enhancing your knowledge on both organizational and industry related cybersecurity policy adherence status at any point in time. Cyber Watch is also capable of being connected to many other enterprise corporate solutions such as a SIEM and a SOC incident management dashboard.

## MULTI-SITE CAPABILITIES

Cyber Watch is scalable and can support hundreds of locations managed centrally via the multi-site solution. It is designed so that data from all sites is centrally aggregated, including full asset inventory, traffic, and alerts data. Alert management allows you to add comments, and acknowledge, and resolve alerts and CVEs. All updates such as threat and configuration rules as well as NVD updates made in Cyber Watch are designed to be automatically pushed to the managed locations.



Cyber Watch Multi-Site Dashboard

## GOVERNANCE AND COMPLIANCE

Cyber Watch also provides an option that addresses your need for adhering to organizational policies and industry regulations: The Cyber Watch Governance Dashboard.

The Cyber Watch Governance Dashboard is engineered to enable your building IT and audit departments to centrally define and monitor adherence to company policies and OT-related standards and regulations such as IEC 62443, the NIST framework, and most major OT compliance frameworks.

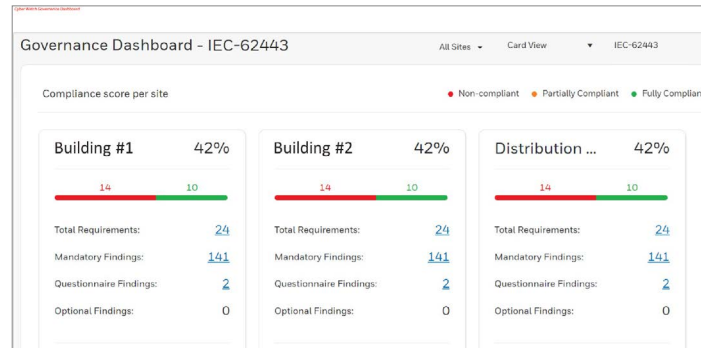
This functionality can enable CISOs to plan their cybersecurity strategy and report and measure their organization's adherence based on the actual data derived from the networks.

Configured and managed centrally, the Cyber Watch Governance Dashboard is designed to provide a user the ability to define a comprehensive organizational

policy, measuring adherence to regulations and protocols. It's capable of then tracking and measuring adherence as well as monitoring progress made over time across distributed sites. It also includes a tracked changes feature – the ability to support incremental, time-based changes.

The adherence status is displayed as a compliance score on the detailed dashboards and reports. The Cyber Watch Governance Dashboard determines the score based on actual network traffic, instead of relying on historical data or on estimations. It is also designed to provide users an alert when an attack happens globally.

The Governance Dashboard also includes the capability to receive weekly updates on security trends in the world where the updates are in the form of reputation (malicious IP, DNS, and file hashes) and as a report. The report is relevant to the specific site according to 6 parameters: (1) Industry, (2) Country, (3) Vendor, (4) Device Type, (5) CVE, and (6) Protocols.



Cyber Watch Governance Dashboard

## HONEYWELL FORGE CYBERSECURITY+ FOR BUILDINGS | CYBER WATCH IS DESIGNED TO PROVIDE



### CENTRAL SECURITY MANAGEMENT

Get access to known cyber threats at an individual site or across multiple sites and centralize the coordination of response. Cyber Watch is highly scalable and can support hundreds of distributed sites managed centrally via the multi-site portal.

### CENTRAL GOVERNANCE

Vendor-neutral, on-premise solution, designed by OT cybersecurity professionals for OT environments.

### AUTOMATE SITE MANAGEMENT

Central configuration management, central licensing, automated software updates, and more are possible.



### ALWAYS UP TO DATE

It's based on real time data extracted from your network, and provides continuous, real-time visibility to the adherence of regulations and industry frameworks

### IMPROVES OVER TIME

Track improvement of organizational policy adherence over time.

### REPORTING

Automatically generate compliance reports for executive and on-site teams.

### MSP READY

It's public or private cloud enabled. Manage multiple organizations / customers with secure, full data segregation and more.



### REDUCE COSTS

Centrally manage the governance of an organization's remote sites, and eliminate the need for travel and on-site audits.

### MITRE ATT&CK FRAMEWORK

The Cyber Watch MITRE ATT&CK framework enables security professionals to move beyond identifying the most common attack methods.





Honeywell has more than a century of experience in building automation, with over 20 years in industrial and building cybersecurity, deploying thousands of solutions worldwide. We provide cybersecurity solutions that protect the availability, safety and reliability of OT assets worldwide. Honeywell's complete portfolio includes cybersecurity software, managed security services, building security consulting and integrated security solutions. We provide the premier cybersecurity solutions for an operational technology environment.

**For More Information**  
[buildings.honeywell.com](https://buildings.honeywell.com)

**Honeywell Building Technologies**  
715 Peachtree St NE  
Atlanta, Georgia 30308  
[www.honeywell.com](https://www.honeywell.com)

This document is a non-binding document that contains proprietary information of Honeywell. It does not create any binding obligations on us to develop or sell any product, service or offering. Content provided herein cannot be altered or modified and must remain in the format as originally presented by Honeywell. Any descriptions of future product direction, intended updates, or new or improved features or functions are intended for informational purposes only and are not binding commitments on us and the sale, development, release or timing of any such products, updates, features or functions is at our sole discretion. All pictures shown in this document are for illustration purposes only; the actual product may vary. Honeywell® is a trademark of Honeywell International Inc. Other brand or product names are trademarks of their respective owners.

Honeywell Forge  
Cybersecurity+ for Buildings | Cyber Watch | 12/23  
© 2023 Honeywell International Inc.

**THE  
FUTURE  
IS  
WHAT  
WE  
MAKE IT**

**Honeywell**