

# HOW A TEAM OF STADIUMS PERFORMS AS ONE

64 matches, 32 teams, 8 stadiums – but  
just one cloud-based Honeywell system to  
operate every venue simultaneously, with ease

---

QATAR STADIUMS CASE STUDY

---

**Honeywell**



# SEAMLESS INTEGRATION FOR QATAR STADIUMS

When one of the world's biggest sporting tournaments came to Qatar in November 2022, the host country wanted to create world-class experiences across all eight stadiums.

The mission: Optimize stadium operations, support sustainability, and set a new standard for tournaments to come.

The project called for one stadium to be retrofitted and rapid construction for seven more, as well as other infrastructure needs. Technology services for all stadiums were delegated to INTALEQ, information-technology specialists for sports venues.

The goal was to create exceptional experiences for all 64 matches around the country – many held simultaneously. The solution: Integrate a centralized building control system to support safety and comfort for fans, players, and organizers, as well as efficient operations for stadium owners. Integrating this complex requires an experienced technology partner, and INTALEQ knew just who to call: Honeywell.

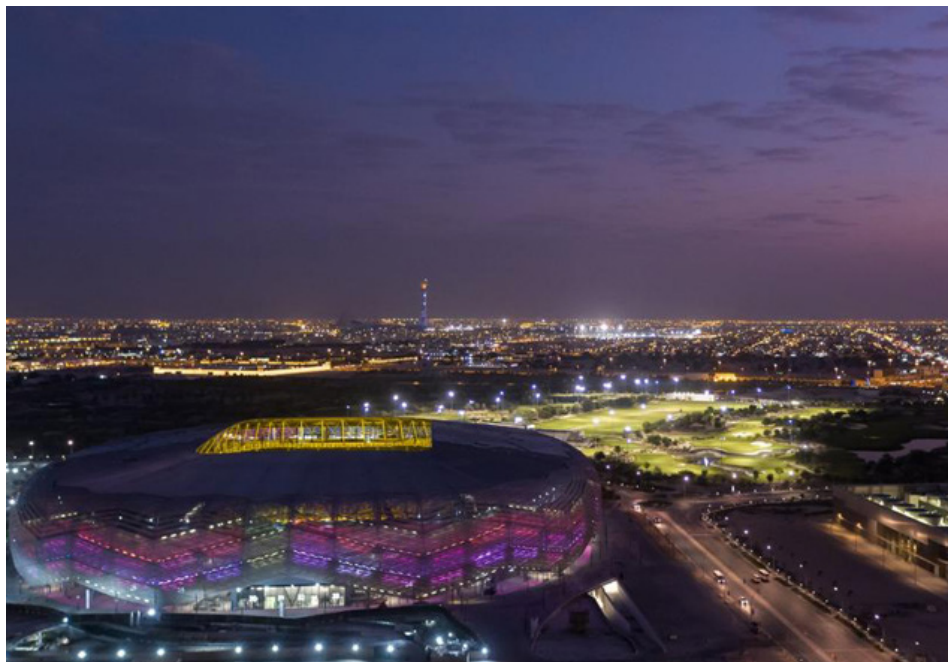
## THE CHALLENGE

Create premium stadium experiences suited to world-class athletes:

- Provide central monitoring and control of all stadiums from a single platform
- Maintain comfortable environments for fans and athletes at all times of year

Select a technology partner with proven success at complex, multi-city integration:

- Enable tournament infrastructure to remain resilient and useful for years to come
- Integrate building management, access control and intrusion detection between each venue and a command center
- Support sustainability goals by implementing and monitoring high-efficiency energy use



## THE SOLUTION

The stadiums range 40 miles (64 km) around Doha, each with unique needs for its design, security and building management system (BMS).

Given this scope, Honeywell recommended a cloud-based solution as a fast, effective way to enable private and secure integration within and between each venue, all connected to the Aspire Command & Control Center.

This collaboration led to UNISTAD – a connected-stadium platform for remotely monitoring and controlling BMS functions.

Honeywell provided two further critical systems – BMS and access control – integrated across all venues. As the provider for the overall cloud-based platform, Honeywell also needed to integrate seamlessly with all other system providers, as well as multiple software protocols.

## CENTRAL, CLOUD-BASED CONTROL

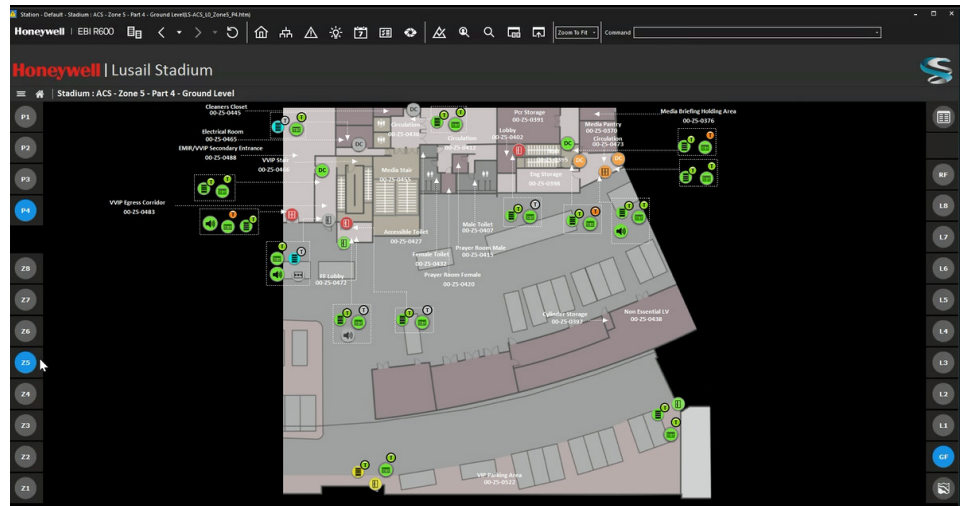
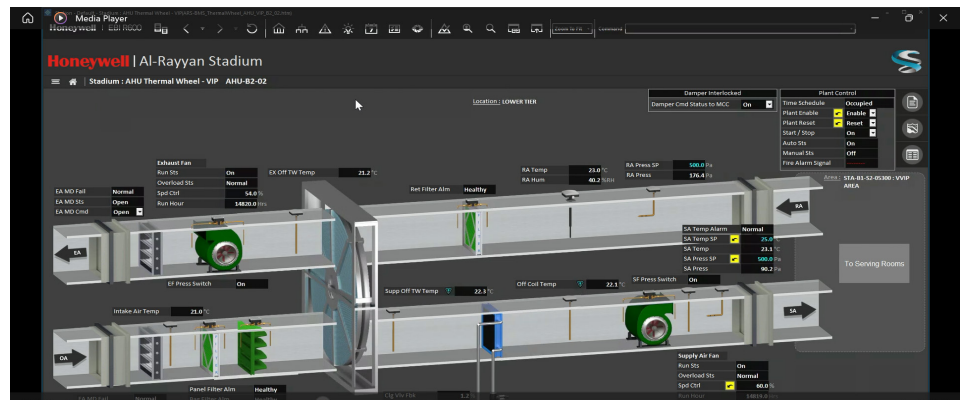
Honeywell recommended Enterprise Buildings Integrator (EBI) as the cloud-integration platform and BMS. They also implemented a distributed system architecture, which lets all sites share resources as a single system for better functionality, and faster, more cost-effective integration.

Each stadium achieves extremely precise operations using 500 controllers to manage as many as 50,000 edge devices. Project officials stipulated that Honeywell controllers be used systemwide for this, enabling optimal integration, consistent performance and easier management.

Honeywell also designed and implemented a unique sensor-based pitch-cooling system to help players stay comfortable on the field at each stadium.

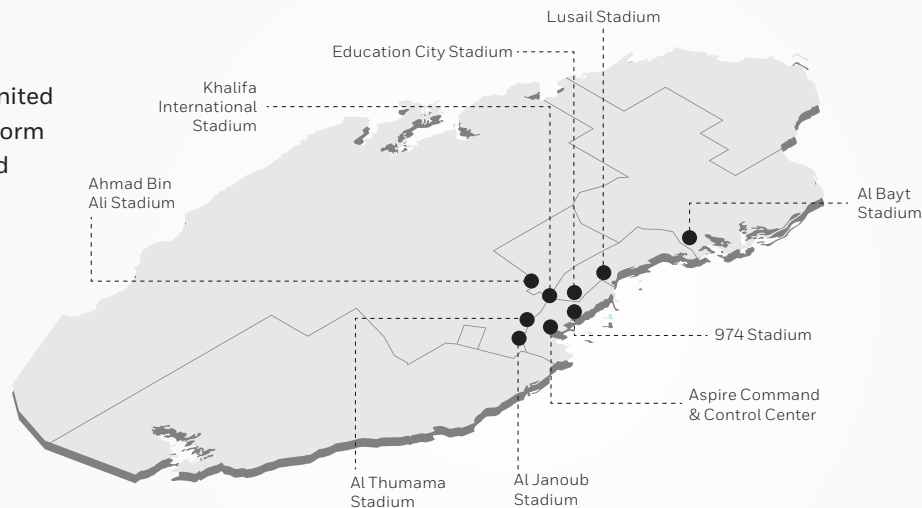
Finally, by linking the stadiums to UNISTAD at the Aspire Command & Control Center, Honeywell enabled security, safety and BMS needs to be centrally controlled at every venue, simultaneously.

The ultimate result has exceeded stakeholder expectations: Reliable, cost-effective control and energy efficiency that helps Qatar deliver world-class stadium experiences, during the tournament and beyond.



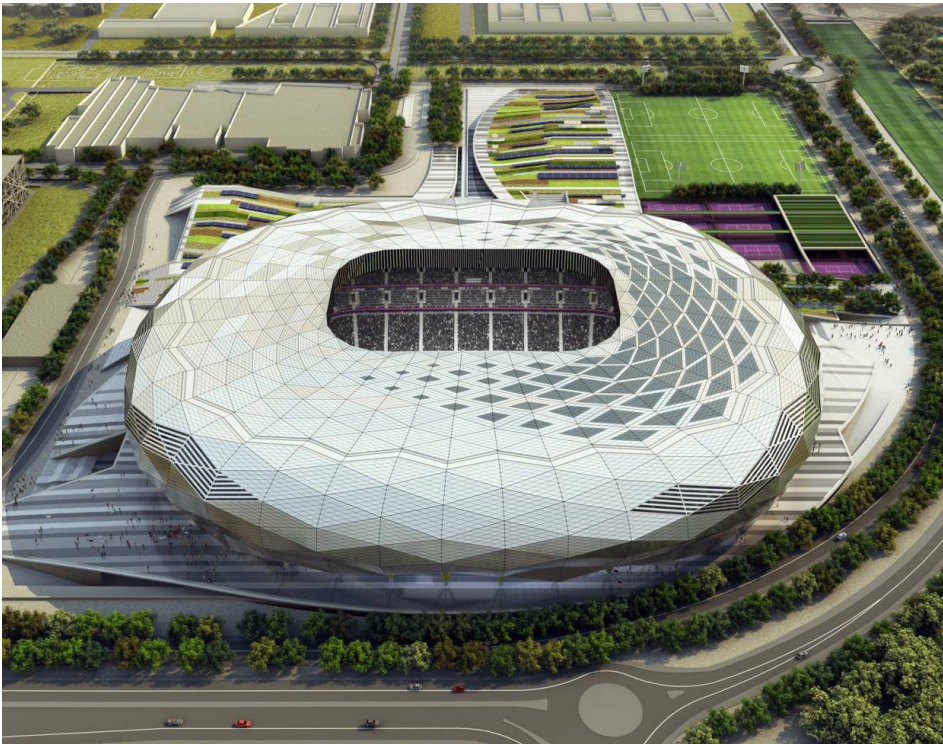
## QATAR STADIUMS

Eight stadiums united into a single platform (Aspire Command & Control Center)



## THE BENEFITS

- Tournament and stadium operations exceeded stakeholder expectations
- Fans and athletes enjoyed world-class experiences due to the ease of centrally controlling all 8 stadiums, simultaneously
- Pitch-cooling systems help keep athletes comfortable at all times of year
- Resilient, efficient stadium infrastructure helps support sustainability goals using automated energy optimization
- Easier integration, maintenance, and operations by using distributed system architecture and a consistent set of devices across all stadiums
- Open platform readily integrates third-party technologies for future needs



## KEY HONEYWELL TECHNOLOGIES

- Streamlined experience operating all stadiums centrally, using Enterprise Buildings Integrator as the universal interface, BMS and cloud-integration platform
- Each stadium achieves the energy efficiency to support sustainability goals using 500 Honeywell controllers with 50,000 edge devices for optimal precision and automation
- Remote, real-time monitoring and rapid response to safety needs using Honeywell access control and intrusion detection, as well as cloud-based fire-safety for Al Thumama Stadium

**How much more can your building do?**

**Find out, with Honeywell**

[Buildings.Honeywell.com](https://Buildings.Honeywell.com)

### **Honeywell Qatar**

Amwal Tower, 5<sup>th</sup> floor

Al Wahdah St

Street 820

Al Dafna

Doha

Qatar

[www.honeywell.com](https://www.honeywell.com)

© 2023 Honeywell International Inc.

**THE  
FUTURE  
IS  
WHAT  
WE  
MAKE IT**

**Honeywell**