



TRANSFORM SUSTAINABILITY INTO BUSINESS STRATEGY

Gain the insights to plan your sustainability efforts
and know whether they're on track

Honeywell Carbon and
Energy Management

Honeywell

HONEYWELL CARBON AND ENERGY MANAGEMENT

Sustainability is not a buzzword. It's now a priority for many stakeholders around the world.

According to United Nations Environment Programme, the buildings and construction sector accounted for around 37% of energy- and process-related carbon dioxide (CO₂) emissions and more than 34% of energy demand globally in 2021.¹ This is a new high as compared to the pre-pandemic levels, which leaves the sector off track to decarbonize by 2050.

ONE PLATFORM TO DRIVE SUSTAINABILITY ACROSS YOUR BUILDING PORTFOLIO

Carbon and Energy Management is part of the Honeywell Buildings Sustainability Manager, powered by Honeywell Forge. Buildings Sustainability Manager is a ready-now autonomous controls platform, with a suite of applications to help customers address two pressing, yet often conflicting objectives: optimizing indoor air quality and reducing the environmental impact of buildings with the aim of improving carbon-reduction goals.

The scalable, system-agnostic platform leverages the Honeywell Forge enterprise performance management software's artificial intelligence (AI) and machine learning (ML) algorithms to help customers meet their sustainability goals.

CONTROL ENERGY CONSUMPTION AND CARBON FOOTPRINT

Carbon and Energy Management ends the hassle of accessing and analyzing siloed energy and carbon data. It enables you to manage and control that data.

The application deciphers how your building uses energy while providing a clear analysis of energy and carbon emissions (scope 1 and 2)² at the asset, site and portfolio levels. It uses smart meters, sensors and utility data to segment actual consumption and energy emissions by utility type. Then the application analyzes that data alongside factors like weather, occupancy and utility rates to provide insight into building performance.

Carbon and Energy Management doesn't just monitor performance. It also features advanced control capabilities with real-time insights into the HVAC

system, and set-point control to take corrective action. This means you can adjust your HVAC performance before an increase in energy consumption, service costs or equipment deterioration.

- Tracks energy use, scope 1 and scope 2 emissions and other key performance indicators (KPIs)
- Adjusts energy baseline for weather and occupancy
- Integrates with any BMS to manage alarms and alerts, monitor points, adjust schedules and proactively control your building
- Features reporting that complies with Energy Star® certification
- Monitors live meter data for CO₂ emissions, energy and utilities
- Prioritizes the most cost-effective ways to save
- Manages utility bills and tenant billing
- Includes alarm console to easily manage critical assets and KPIs

1. United Nations Environment Programme (UNEP), [2022 Global Status Report for Buildings and Construction](#). (Accessed 6 December 2022.)

2. Scope 1 and scope 2 greenhouse gas emissions are measured using the latest standards from the Intergovernmental Panel on Climate Change's Fifth Assessment Report (IPCC AR5).

BETTER INSIGHT MEANS BETTER COMPLIANCE AND MANAGEMENT

Visual analytics

- View, filter and benchmark custom KPIs such as energy use and carbon emissions
- See analysis at multiple levels across your portfolio, from buildings down to individual assets
- Visualize KPIs in real time as well as trends and forecasts

Compliance and reporting

- Document results for compliance and internal benchmarking
- Validate the effectiveness of energy-conservation measures

Utility bill management

- Collect and analyze utility bill data, automatically
- Integrate directly with utility companies all over the world

IMPROVE EQUIPMENT PERFORMANCE AND INTEGRATION

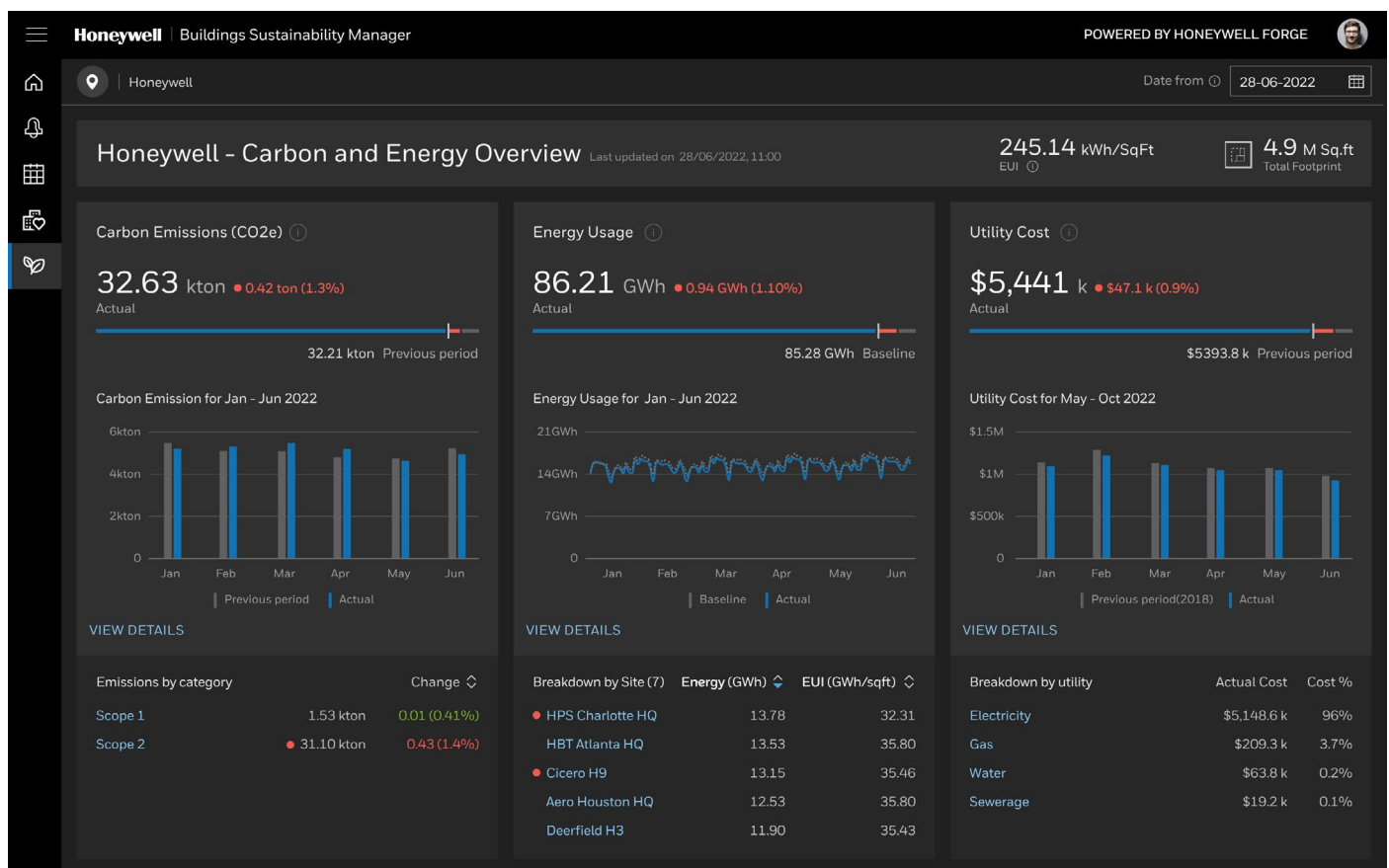
Continuous equipment optimization

- Enables automated equipment adjustment based on actual performance using monitoring-based commissioning, which avoids the costly limitations of retro-commissioning
- As part of the broader Honeywell Buildings Sustainability Manager,

can help buildings achieve the dual goals of greater energy efficiency and healthier spaces

Open integration and data collection

- Gain comprehensive view with data from smart meters, sensors, building management system, and utility companies
- Integrate with virtually any building systems and equipment via open standards (BACnet™ and Modbus®)



Transform sustainability goals into action

hwill.co/SustainableBuildings

Honeywell Building Technologies

715 Peachtree St NE
Atlanta, Georgia 30308
buildings.honeywell.com