



Sylk Actuator Analytics Service

INSTALLATION INSTRUCTIONS

JUNE 2021

Disclaimer

The material in this document is for information purposes only. The content and the product described are subject to change without notice. Honeywell makes no representations or warranties with respect to this document. In no event shall Honeywell be liable for technical or editorial omissions or mistakes in this document, nor shall it be liable for any damages, direct or incidental, arising out of or related to the use of this document. No part of this document may be reproduced in any form or by any means without prior written permission from Honeywell.

Copyright © 2021 HONEYWELL International, Inc. All rights reserved.

Software License Advisory

This document supports software that is proprietary to Honeywell International Inc. and/or to third party software vendors. Before software delivery, the end user must execute a software license agreement that governs software use. Software license agreement provisions include limiting use of the software to equipment furnished, limiting copying, preserving confidentiality, and prohibiting transfer to a third party. Disclosure, use, or reproduction beyond that permitted in the license agreement is prohibited.

Trademark Notice

Honeywell logo, WEB-8000, WEBs-N4, WEBStation, Sylk, CIPer and Spyder are trademarks of Honeywell, Inc.

LON, LonMark, LonWorks, LNS, and Neuron are registered trademarks of Echelon Corporation. BACnet and ASHRAE are registered trademarks of American Society of Heating, Refrigerating and Air-Conditioning Engineers. Microsoft, Excel, Internet Explorer, Windows, Windows Vista, Windows Server, and SQL Server are registered trademarks of Microsoft Corporation. Oracle and Java are registered trademarks of Oracle and/or its affiliates. Mozilla and Firefox are trademarks of the Mozilla Foundation.

Niagara Framework[®], NiagaraAX Framework are registered trademarks of Tridium, Inc. All other product names and services mentioned in this publication that are known to be trademarks, registered trademarks, or service marks are the property of their respective owners.

Table of Contents

ABOUT THIS GUIDE	4
Applicable Technical Literature	4
INSTALLATION	5
System Requirements.....	5
Licenses.....	5
Steps to install License files	5
Modules.....	7
Adding Module to the Station.....	7
Steps to add Sylk Actuator Service	7
TROUBLESHOOTING.....	10

About This Guide

This guide provides detailed procedure to install the Sylk Actuator Analytics Service along with the prerequisite requirements. It is intended to help System Integrators and Application Engineers to install the Sylk Actuator Analytics Service on WEBs-N4 Workbench. It is recommended that the user should have some training or previous experience working with WEBs-N4 Workbench.

Applicable Technical Literature

Document Title	Document ID
Sylk Actuator Analytics Service User Guide	31-00420
CIPer Model 30 System Engineering User Guide	31-00237
CIPer Model 30 Installation and Operation Guide	31-00206
CIPer Model 30 Installation Instructions	31-00183
Spyder Tool User Guide for WEBs-N4	31-00089
Spyder [®] BACnet [®] Programmable Controllers Installation Instructions	62-0310
Spyder [®] Lon Programmable Controllers, VAV/Unitary Controllers Installation Instructions	62-0287



IMPORTANT

Email your Host Id to Honeywell WEBs Customer Care (websliense@honeywell.com), so we can move the license to your organization. For additional queries contact your distributor

Installation

This section provides you information about prerequisite requirements and installation procedure to install Sylk Actuator Analytics Service in the WEBS-N4.X workbench.

System Requirements

Requirement	Source
Workbench	Honeywell WEBStation-N4.X
Software	CIPer Model 30 latest released tool
Browser	Latest Google Chrome
Controller	Sylk Actuator is connected to WEB-8000 via Spyder controller, and WEB-8000 is connected to a supervisor. Sylk Actuator is connected to a supervisor via CIPer Model 30 controller.



NOTE

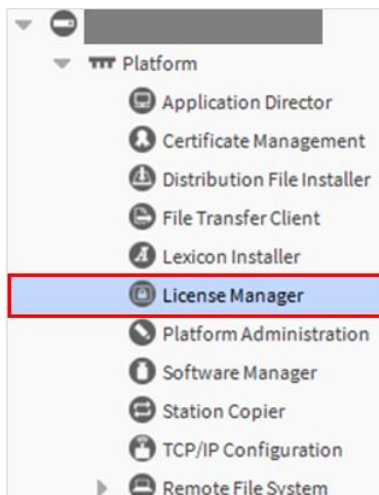
Sylk Actuator Analytics Service is available for WEBS-N4 Supervisor and CIPer Model 30 controller with WEBS 4.X. For offline configuration, the engineering workbench/ workstation can be used.

Licenses

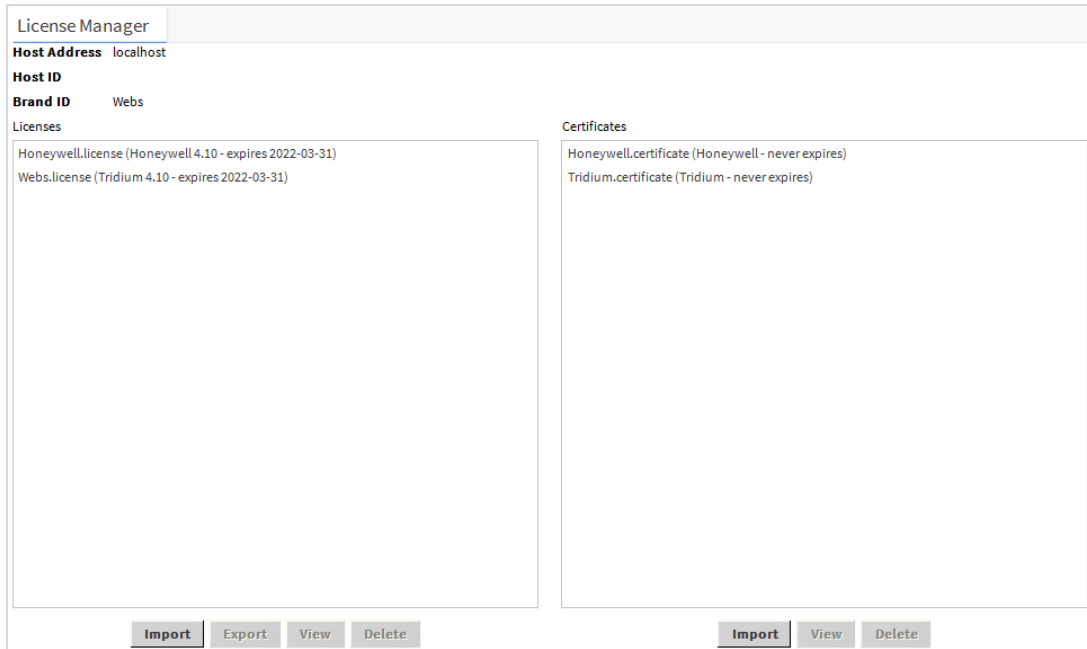
The Sylk Actuator Analytics Service requires a **SylkActuatorAnalytics** feature name to be present in the license. The license installed for WEBS-N4 workbench supports Sylk Actuator Analytics Service. The license can be added using License Manager available under the Platform of the workbench. Follow the below steps to install the license:

Steps to install License files

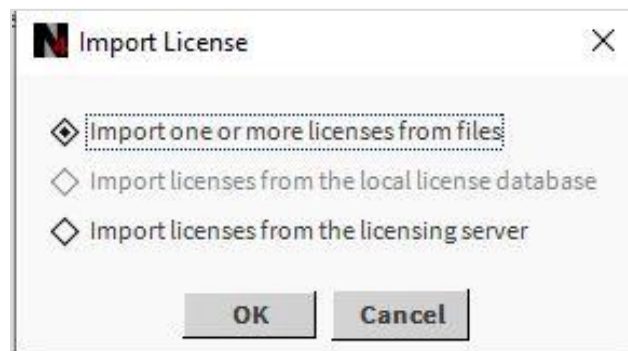
1. Connect to platform, expand the platform, and then select **License Manager**.



- This action displays **License Manager** window, License Manager window comprises of License and Certificate section.



- Select **Import** option from the bottom of License section to add the license. The Import License window allows you to import a license in three ways.
 - Import one or more license from files:** To import license from the local file.
 - Import license from the local license database:** To import license from the local database. This option is enabled when there is a local license database.
 - Import licenses from the licensing server:** To import license from the licensing server in case there are no license present in the local files and databases. It is recommended to restart the WEBs-N4 workbench after update is finished.



- Select any of the option and click **OK** to complete licensing.



NOTE

License for CIPer Model 30 controller: The Sylk Actuator Analytics service does not require a separate license for CIPer Model 30 controllers. A controller running on WEBs-N4.10 version and CIPer Model 30 supports Sylk Actuator Service.

Modules

The modules required to install Sylk Actuator Analytics Service are **SylkActuatorAnalytics-rt.jar** and **SylkActuatorAnalytics-ux.jar**. Sylk Actuator Analytics modules are included in the WEBS N4 Supervisor 4.10 version.

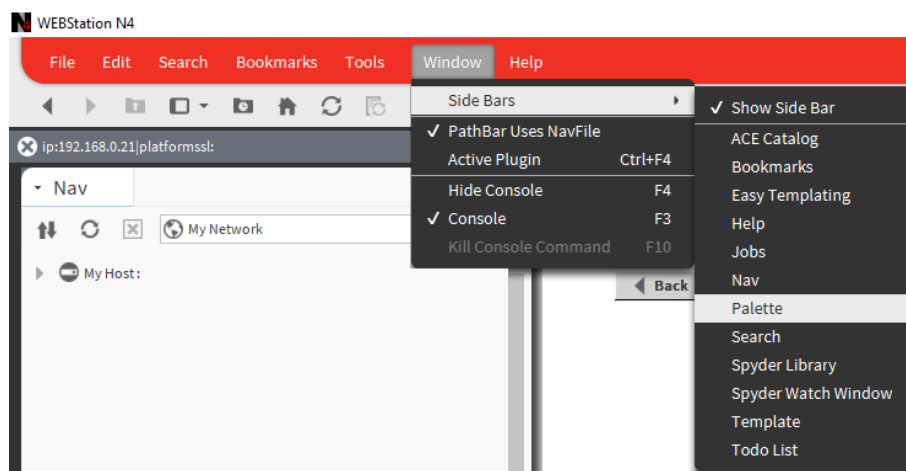
Adding Module to the Station


The Sylk Actuator Service displays the parameters derived using analytics which will help users to quickly understand the performance of the actuators. To use this service, user need to add Sylk Actuator Analytics module in the Service bucket.

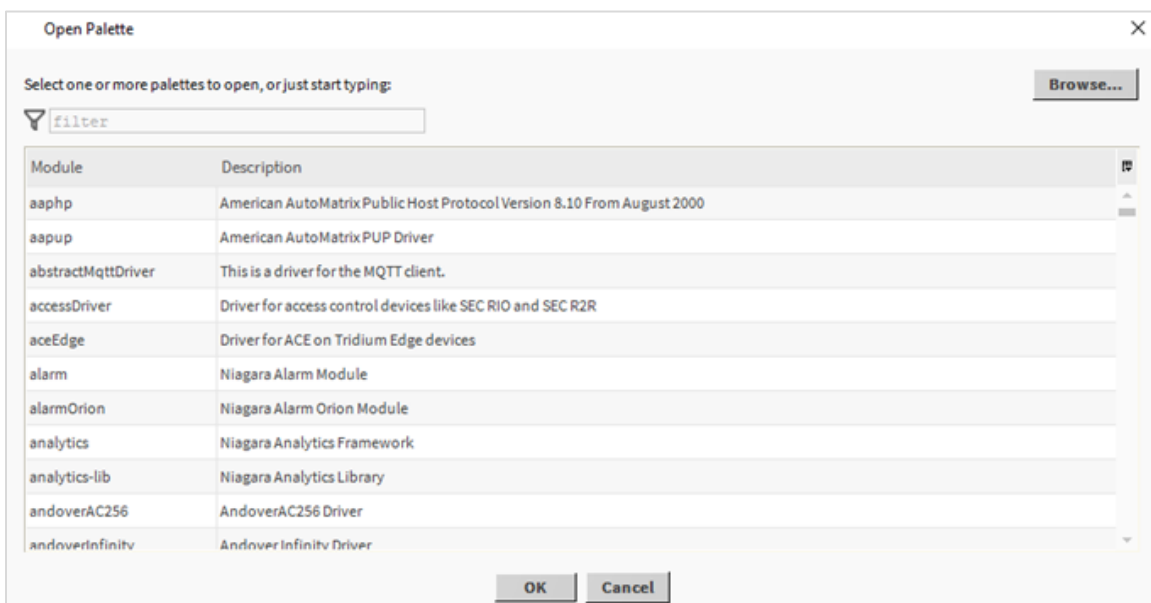
Refer to guides available in the **docs** folder at **C:\Honeywell\WEBStation- N4.X.X.XXX\docs** to get help with starting a new supervisor station using the Workbench.

Steps to add Sylk Actuator Service

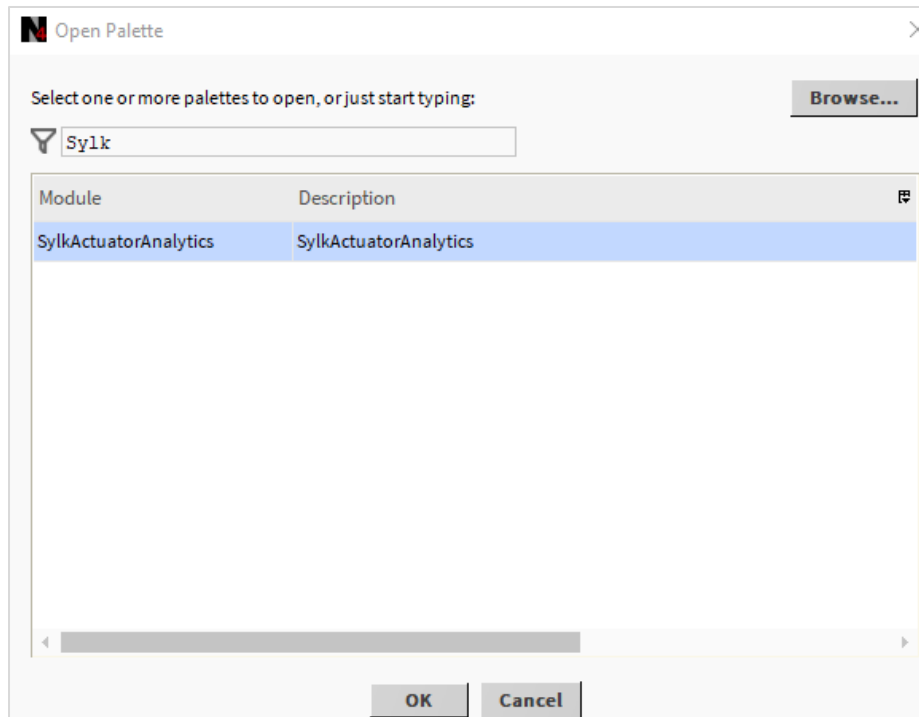
1. Navigate to **Window > Side Bars > Palette** to open the palette pane.



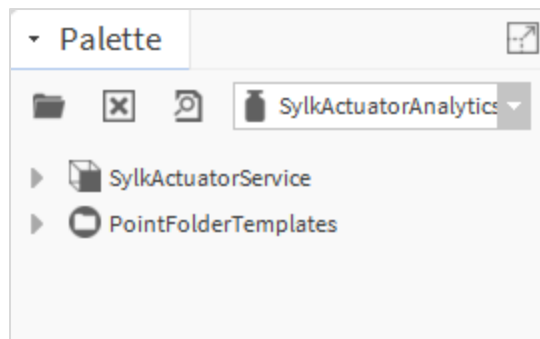
2. Click  (Open Palette) option. This action opens Palette window.



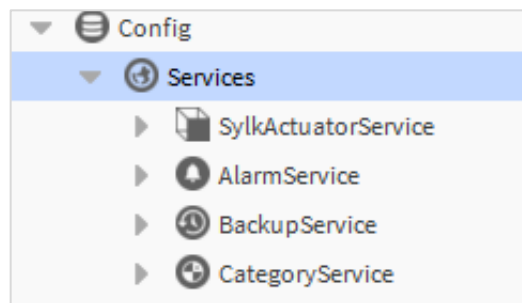
3. Enter **Sylk** in the filter field, select **SylkActuatorAnalytics** and click **OK**. This adds Sylk Actuator Analytics module in the Palette.



4. Open Palette select SylkActuatorAnalytics from drop-down list.



5. Drag and drop the **SylkActuatorService** under **Station > Config > Services**. This service is pre-configured with the components and widgets which can be viewed using workbench or chrome browser.



6. Double click **SylkActuatorService** to open the **SylkActuatorWidget**.



NOTE

This service can be accessed through web browser and workbench.

Troubleshooting

Use Case	Solution
If the SylkActuatorWidget view does not load.	<ol style="list-style-type: none"><li data-bbox="610 348 1487 411">1. Check, if the Sylk Actuator Analytics module is installed in the modules folder of the WEBS-N4 Supervisor.<li data-bbox="610 432 1487 495">2. Check, if the Sylk Actuator Service is added under Services container<li data-bbox="610 516 1487 590">3. Check, if the license has the feature name "SylkActuatorAnalytics" available in the license manager of the WEBS-N4 Supervisor.