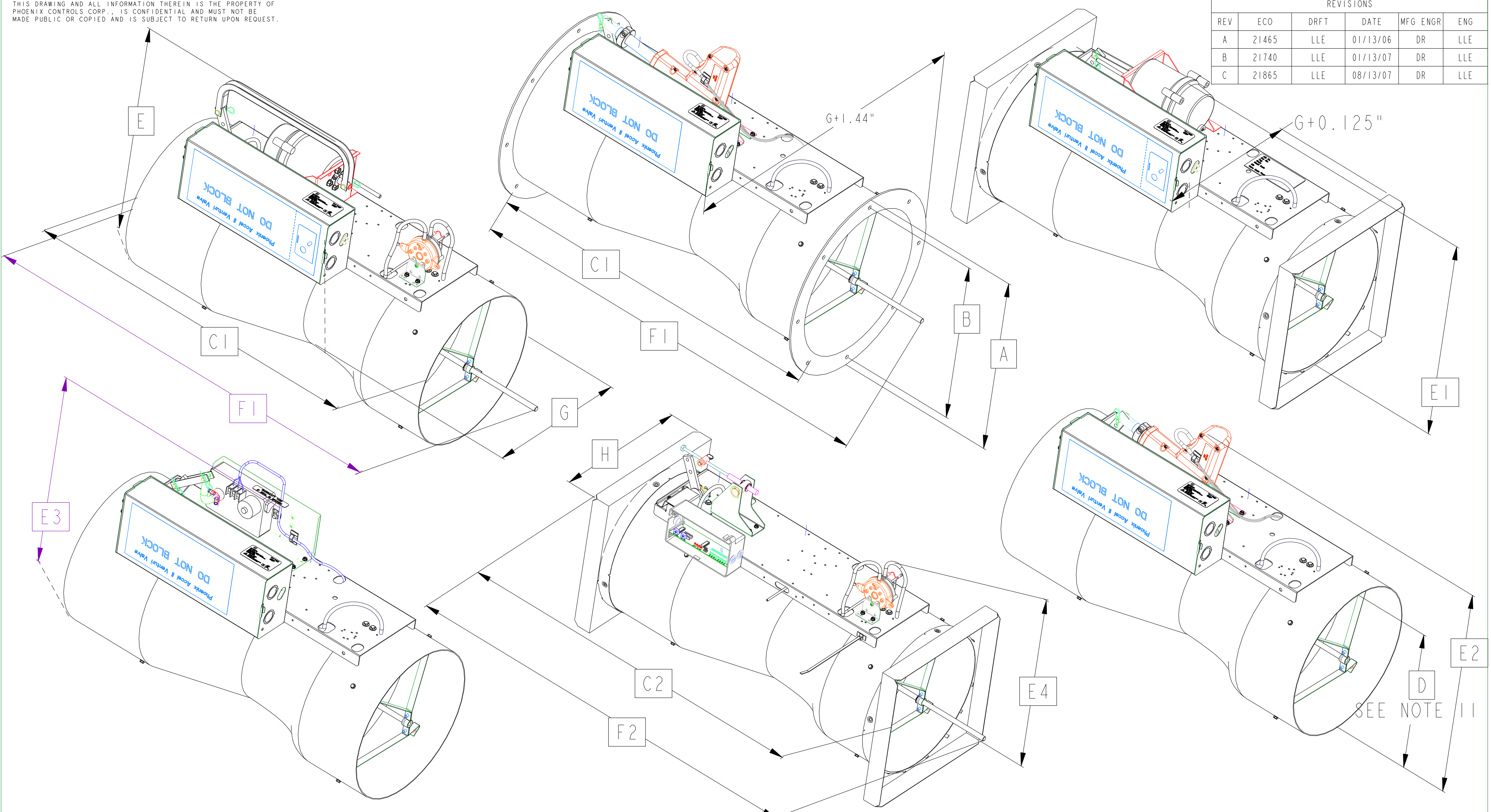


THIS DRAWING AND ALL INFORMATION THEREIN IS THE PROPERTY OF PHOENIX CONTROLS CORP. IS CONFIDENTIAL AND MUST NOT BE MADE PUBLIC OR COPIED AND IS SUBJECT TO RETURN UPON REQUEST.

REVISIONS					
REV	ECO	DRFT	DATE	MFG ENGR	ENG
A	21465	LLE	01/13/06	DR	LLE
B	21740	LLE	01/13/07	DR	LLE
C	21865	LLE	08/13/07	DR	LLE



	A (FLANGE OD)		B (BOLT CIRCLE)		C1		C2 (FLANGE)		D		E		E1 (NC VALVE)		E2 (HISEA VALVE)		E3 (LOSEA VALVE)		E4 (PS TUBING)		F1		F2 (FLANGE)		G		H		WEIGHT	
	IN	MM	IN	MM	IN	MM	IN	MM	IN	MM	IN	MM	IN	MM	IN	MM	IN	MM	IN	MM	IN	MM	IN	MM	IN	MM	LBS	KG		
8	10.28	261	9.375	238	23.50	597	26.50	673	7.88	200	13.73	349	12.70	323	13.50	343	12.54	319	14.56	370	27.77	705	29.27	743	10.30	262	8.13	207	12	5.5
10	12.75	324	11.375	289	21.75	552	24.75	629	9.88	251	15.73	400	14.70	373	15.50	394	14.54	369	16.56	420	26.20	666	27.70	704	11.20	285	10.13	257	13	6.0
12	14.75	375	13.375	340	26.81	681	29.81	757	11.88	302	17.73	450	16.70	424	17.50	445	16.54	420	18.56	471	32.67	830	34.17	868	12.04	306	12.13	308	16	7.3
14	16.75	425	15.375	391	30.00	762	33.00	838	13.88	353					20.00	508	19.25	489	21.43	544	36.59	930	38.09	968	13.52	343	15.00	381	20	9.1

- NOTES:
1. LEAVE 14" (356 MM) ACCESS SPACE TO ALL ELECTRONIC CONTROLS.
  2. DIMENSIONS GIVEN ARE OUTER AND ACCURATE TO +/-0.13" (3MM)
  3. VALVES NEED NO ADDITIONAL STRAIGHT RUNS BEFORE OR AFTER THE VALVE. HOWEVER, AS IDENTIFIED BY DIMENSION F ABOVE, THE SHAFT NEEDS UP TO 5.75" (146 MM) OF UNOBSTRUCTED SPACE IN THE DUCT ON THE INLET SIDE OF THE VALVE IN THE MAXIMUM FLOW POSITION
  4. WEIGHTS GIVEN ARE APPROXIMATE AND LISTED FOR REFERENCE ONLY. FOR SHIPPING ADD 6 LBS (2.7 KG)
  5. DIMENSIONS DO NOT ACCOUNT FOR VALVES WITH 3/8" (9.5MM) INSULATION
  6. REFER TO INSTALLATION GUIDE FOR ADDITIONAL INFORMATION.
  7. OTHER OPTIONS ARE AVAILABLE WHICH MAY CHANGE DIMENSIONS SHOWN. REFER TO ENGINEERING GUIDE FOR DETAILS.

8. VALVE BODY THICKNESS : 0.06" (1.5 MM)
9. CIRCULAR FLANGE THICKNESS: 0.125" (3.2 MM)
10. SQUARE FLANGE THICKNESS: 0.036" (0.9 MM)
11. [D] IS O.D. OF VALVES OPENINGS

DRAWN: LLE	DATE: 10-13-05	<b>PHOENIX CONTROLS</b> Corporation
CHECKED: DR	DATE: 01-13-06	
APPROVED: DB	DATE: 01-13-06	TITLE SINGLE VALVE DIMENSION DRAWING
FILE: 795-100-002.RC		SIZE DWG NO.
MATERIAL: SEE NOTE		C 795-100-002
FINISH: SEE NOTES		REV. C
	SCALE: 1:8	SHT 1 OF 1