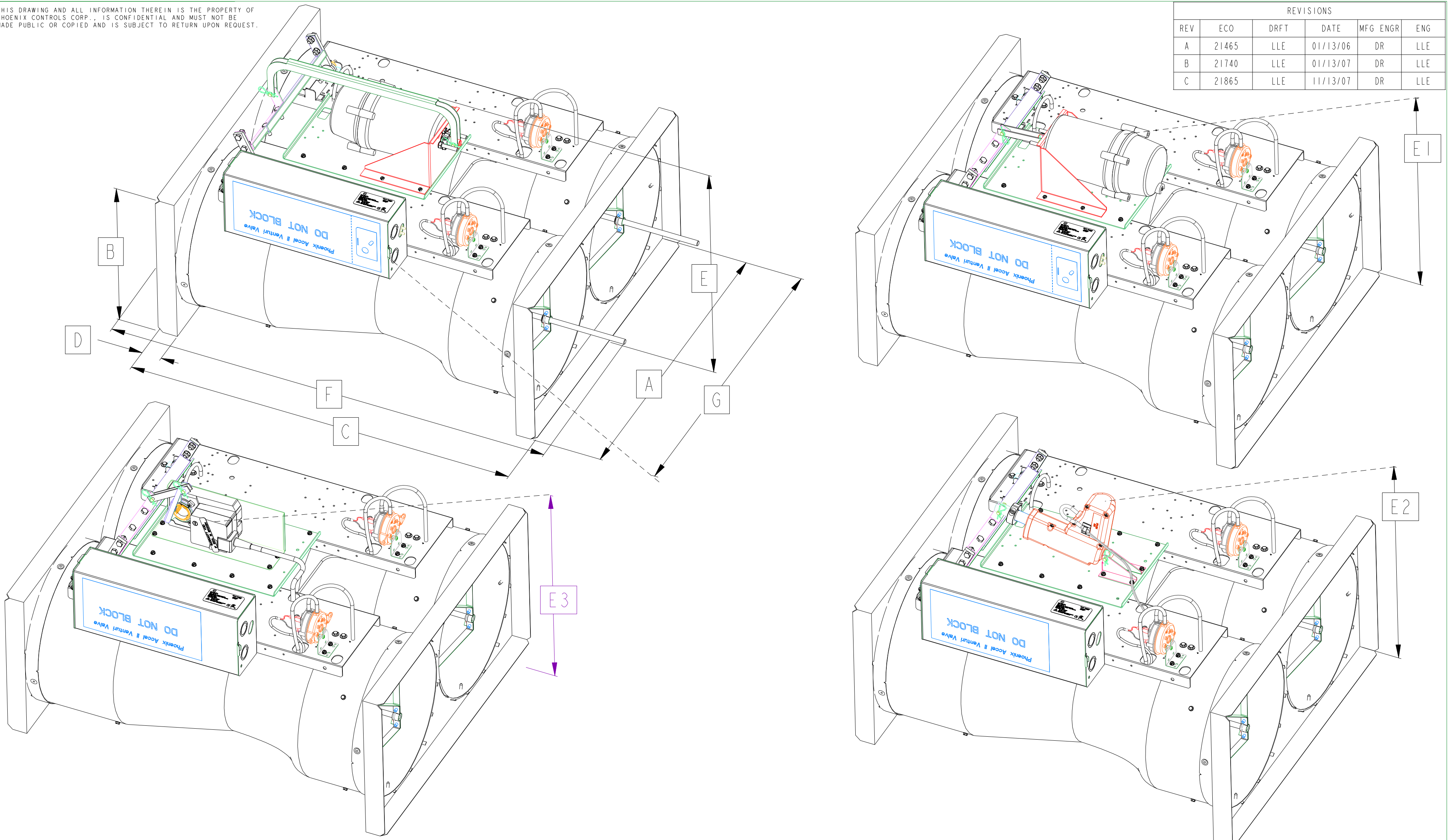


THIS DRAWING AND ALL INFORMATION THEREIN IS THE PROPERTY OF PHOENIX CONTROLS CORP. IS CONFIDENTIAL AND MUST NOT BE MADE PUBLIC OR COPIED AND IS SUBJECT TO RETURN UPON REQUEST.

REVISIONS					
REV	ECO	DRFT	DATE	MFG ENGR	ENG
A	21465	LLE	01/13/06	DR	LLE
B	21740	LLE	01/13/07	DR	LLE
C	21865	LLE	11/13/07	DR	LLE



	A		B		C		D		E		E1 (NC VALVE)		E2 (HISEA VALVE)		E3 (LOSEA VALVE)		F		G		WEIGHT	
	IN	MM	IN	MM	IN	MM	IN	MM	IN	MM	IN	MM	IN	MM	IN	MM	IN	MM	IN	MM	LBS	KG
2-10	20.13	511	10.13	257	24.75	629	1.5	38	16.36	415	14.89	378	15.64	397	14.88	378	27.70	704	21.47	545	30	13.6
2-12	24.13	613	12.13	308	29.81	757	1.5	38	18.44	468	17.37	441	17.72	450	16.96	431	34.17	868	24.47	622	36	16.3
2-14	30.00	762	15.00	381	33.00	838	1.5	38					20.00	508	20.5	521	38.09	968	28.90	734	50	22.7

- NOTES:
1. LEAVE 14" (356 MM) ACCESS SPACE TO ALL ELECTRONIC CONTROLS.
  2. DIMENSIONS GIVEN ARE OUTER AND ACCURATE TO +/-0.13" (3MM)
  3. VALVES NEED NO ADDITIONAL STRAIGHT RUNS BEFORE OR AFTER THE VALVE. HOWEVER, AS IDENTIFIED BY DIMENSION F ABOVE, THE SHAFT NEEDS UP TO 5.75" (146 MM) OF UNOBSTRUCTED SPACE IN THE DUCT ON THE INLET SIDE OF THE VALVE IN THE MAXIMUM FLOW POSITION
  4. WEIGHTS GIVEN ARE APPROXIMATE AND LISTED FOR REFERENCE ONLY. FOR SHIPPING ADD 6 LBS (2.7 KG)
  5. DIMENSIONS DO NOT ACCOUNT FOR VALVES WITH 3/8" (9.5MM) INSULATION
  6. REFER TO INSTALLTION GUIDE FOR ADDITIONAL INFORMATION
  7. OTHER OPTIONS ARE AVAILABLE WHICH MAY CHANGE DIMENSIONS SHOWN. REFER TO ENGINEERING GUIDE FOR DETAIL
  8. VALVE BODY THICKNESS : 0.06" (1.5 MM)
  9. SQUARE FLANGE THICKNESS: 0.036" (0.9 MM)

DRAWN:	LLE	DATE:	10-06-05	<b>PHOENIX CONTROLS</b> Corporation
CHECKED:	DR	DATE:	01-13-06	
APPROVED:	DB	DATE:	01-13-06	TITLE
FILE:	795-100-003.RC			DUAL VALVE DIMENSION DRAWING
MATERIAL:		SIZE	C	DWG NO.
	SEE NOTE			795-100-003
FINISH:	SEE NOTES	SCALE:	1:4	REV.
				C
			SHT	1 OF 1